

Donald High School (7775)

2007 School Level Report

Please check the data in this report. If, after comparing it with your own records, you deem it to be incorrect or incomplete, follow the directions on the web page below:

- <http://www.sofweb.vic.edu.au/standards>, then click on '**Accountability and Improvement**', then click on '**School Performance Reports**'.
-
-

Contents

	Page No.
Privacy	3
SFO Density and LBOTE	4
Teacher Judgments against the VELs	5-13
AIM Reading	14
AIM Mathematics	15
VCE Results	16-19
VET	20
VCAL	21
Teacher Assessment of Student Progress (PSD students)	22-23
Enrolments	24
Apparent Retention	25
Real Retention	26
Exit Destination	27-30
Student Absence	31
Parent Opinion	32-33
Staff Opinion	34
Staff Sick Leave	35
Teaching Staff Retention	36
Bank Balances	37

Privacy

When reporting on the school's performance to the school community, care must be taken to avoid the disclosure of information that can directly or indirectly identify an individual. This may be a particular issue when reporting on the achievement of specific cohorts of students or the opinions of staff where there are small numbers.

In situations where confidentiality cannot be assured, schools may wish to report on the mean result or provide a written comment on school, year level or cohort performance.

Where the School Level Report is provided to school council members as part of any annual reporting process, or used for discussion on a school's performance, such as in consultation with the school community in the school self-evaluation process, it is important to remind school community members of their duty to only use this information for the purpose it was provided, and that the material must be kept confidential.

It is important to note that information that identifies an individual or can be used with other readily available information to identify a person is now protected by the *Information Privacy Act 2000* (<http://www.education.vic.gov.au/about/deptpolicies/informationprivacy.htm>).

SFO Density and LBOTE

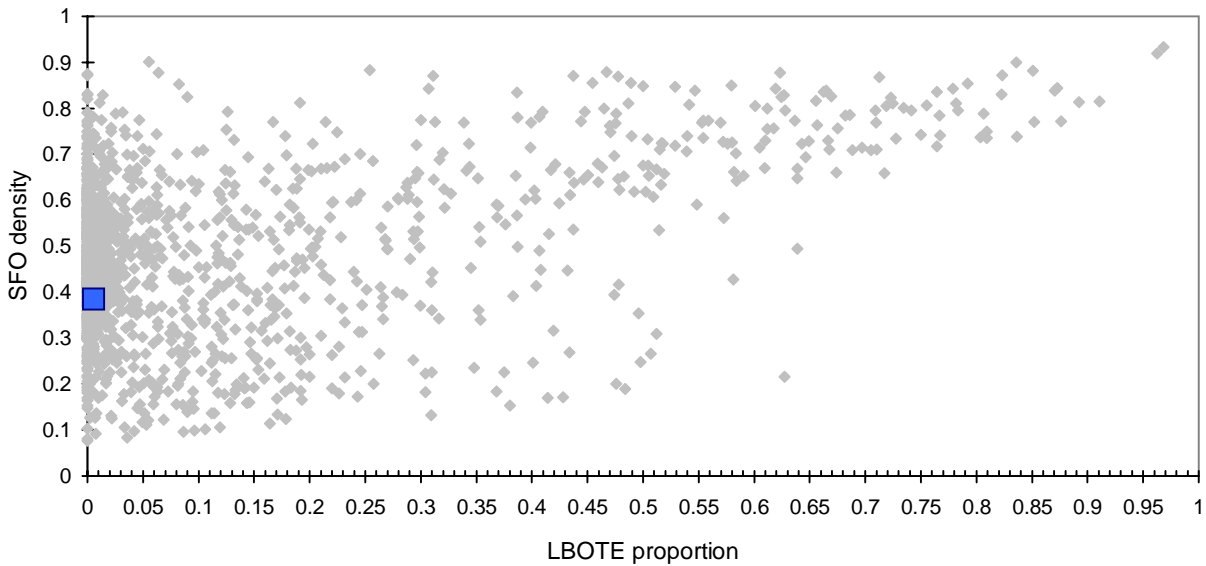
School no: 7775

School name: Donald High School

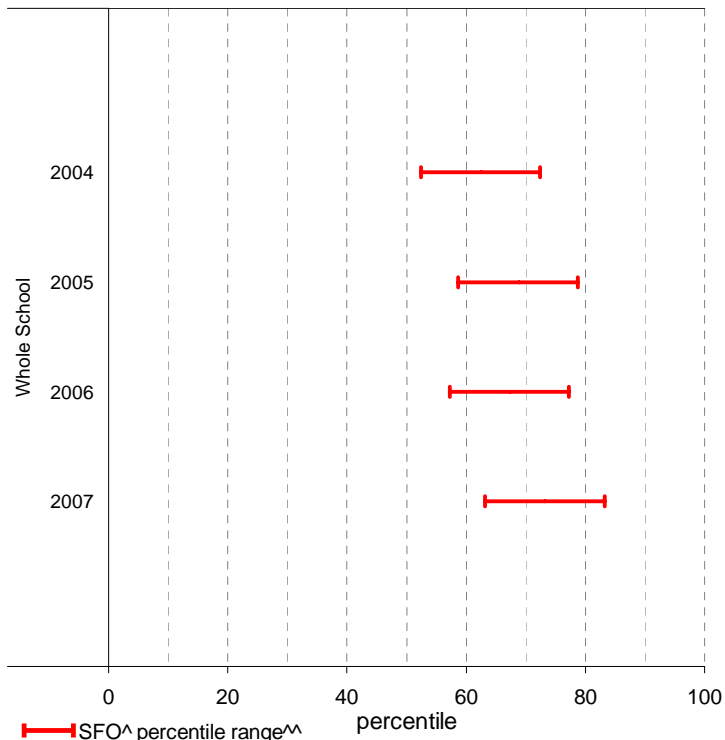
Explanation: The chart below plots the school's 2007 SFO (Student Family Occupation) density[^] and LBOTE (Language Background Other Than English) proportion* against that of all government schools. This school is highlighted as a square on the chart.

	2000	2001	2002	2003	2004	2005	2006	2007
SFO density [^] :					0.45	0.41	0.40	0.38
LBOTE proportion*:	0.01	0.01	0.01	0.00	0.00	0.00	0.01	0.01

School's 2007 SFO density and LBOTE proportion against that of all government schools



School's SFO[^] percentile range^{^^} over time



Notes: [^] The higher the SFO density, the lower the SFO percentile, the lower the socio-economic status (SES).
^{^^} The school's SFO percentile range shows the 20% of schools with an SFO Density most like this school.
 * From 2007, a student is LBOTE if either the student or one parent/guardian speaks a language other than English at home. Prior to 2007, a student is LBOTE if the student or one of the parents was born in a non-English speaking country.

Teacher Judgments against the VELS - Year levels 7-10 combined

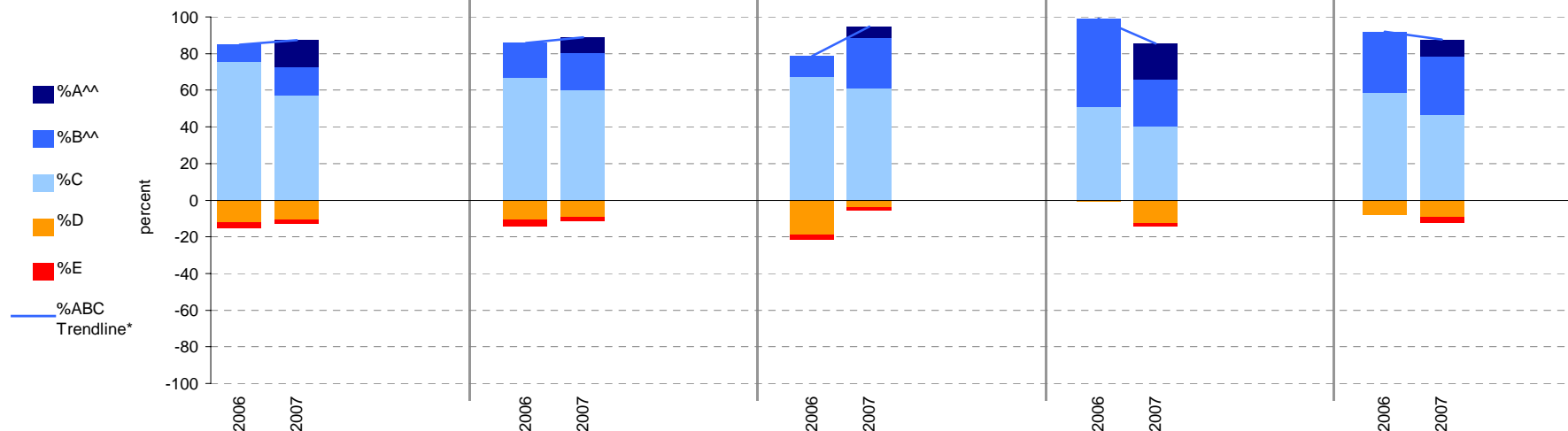
School no: 7775

School name: Donald High School

Source of data: Data retrieved electronically from CASES21.

Explanation: Teacher judgments of student progress against the VELS.

Year Levels:	Reading						Writing					Speaking & Listening					Measurement, Chance & Data					Structure									
	total students	% A^^	% B^^	% C	% D	% E	total students	% A^^	% B^^	% C	% D	% E	total students	% A^^	% B^^	% C	% D	% E	total students	% A^^	% B^^	% C	% D	% E	total students	% A^^	% B^^	% C	% D	% E	
7-10	2006	126	0	10	75	12	3	126	0	19	67	11	3	126	0	11	67	19	2	125	0	48	51	1	0	124	0	33	59	8	0
(combined)	2007	133	14	16	57	11	2	133	8	20	60	9	2	131	6	27	61	4	2	132	20	26	40	13	2	131	9	32	47	9	3



Notes: * The school trendline is being trialled. It is only plotted when there is data for each calendar year.

^^ The cutoff between grades A and B changed in 2007. Further information is available on the following website:
<http://www.education.vic.gov.au/studentlearning/studentreports/schools/whatsnew.htm>.

Teacher Judgments against the VELS - English (secondary)

School no: 7775

School name: Donald High School

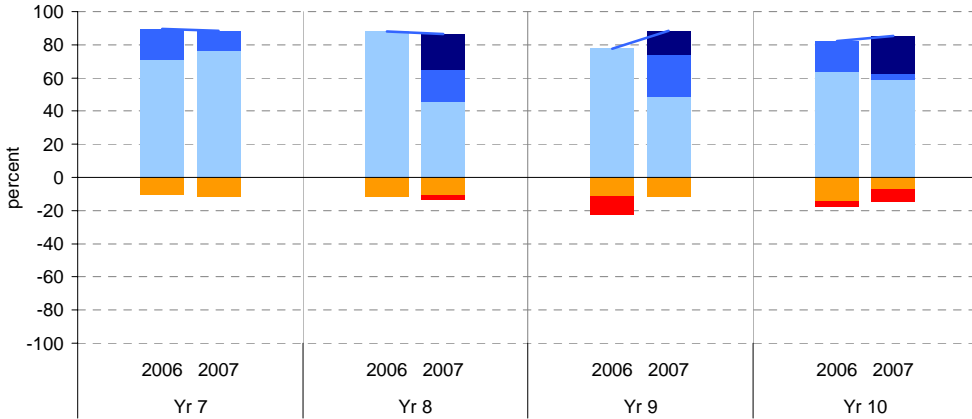
Source of data: Data retrieved electronically from CASES21.

Explanation: Teacher judgments of student progress against the VELS.

Notes: * The school trendline is being trialled. It is only plotted when there is data for each calendar year.
 ** In 2006, approx. 850 schools assessed their students against the 0.25 VELS scale. 2006 benchmarks are therefore based on a subset of schools. 2007 benchmarks will be calculated in August, when data from all schools has been submitted.
 ^ Percentiles for 2007 will be calculated in August, when data from all schools has been submitted.
 ^^ The cutoff between grades A and B changed in 2007. Further information is available on the following website:
<http://www.education.vic.gov.au/studentlearning/studentreports/schools/whatsnew.htm>.

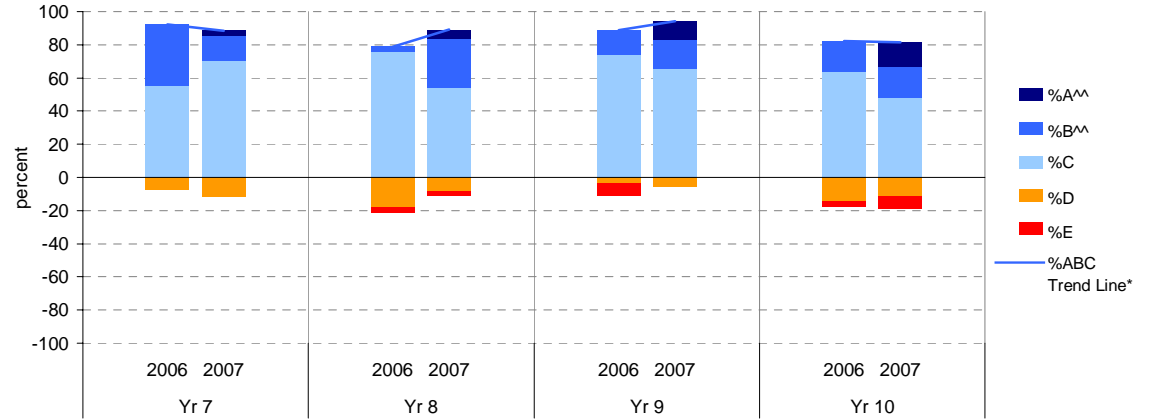
Reading

	total students	% of students by grade					Mean Score			total students	% of students by grade					Mean Score			
		A^	B^	C	D	E	School	State**			A^	B^	C	D	E	School	State**		
Yr 7	2006	38	0	18	71	11	0	4.43	4.32	Yr 9	2006	27	0	0	78	11	11	5.28	5.26
	2007	34	0	12	76	12	0	4.40	4.40		2007	35	14	26	49	11	0	5.56	5.56
Yr 8	2006	33	0	0	88	12	0	4.78	4.78	Yr 10	2006	28	0	18	64	14	4	5.89	5.77
	2007	37	22	19	46	11	3	5.00	5.00		2007	27	22	4	59	7	7	5.96	5.96



Writing

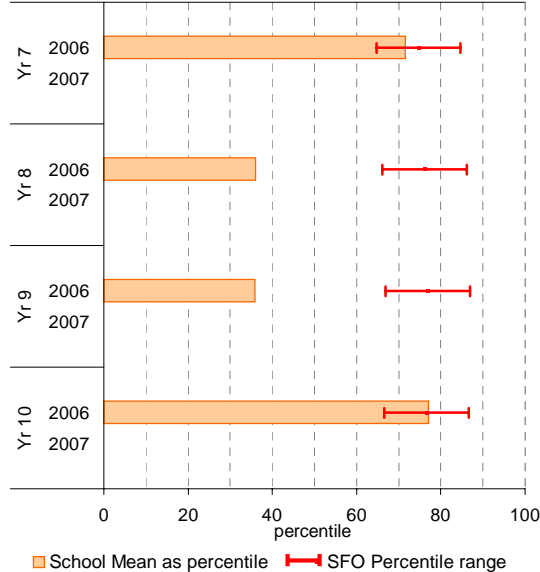
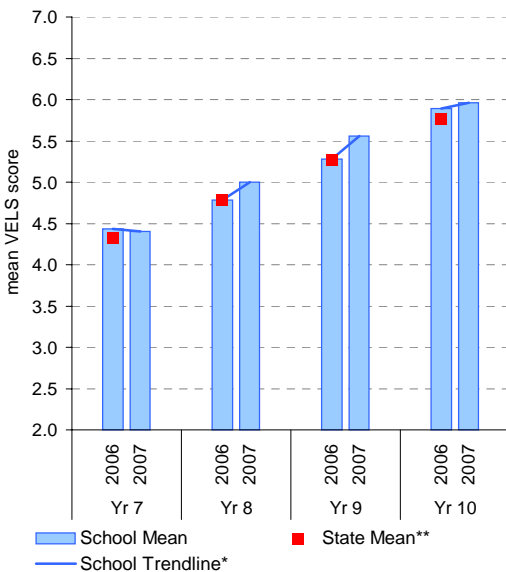
	total students	% of students by grade					Mean Score			total students	% of students by grade					Mean Score			
		A^	B^	C	D	E	School	State**			A^	B^	C	D	E	School	State**		
Yr 7	2006	38	0	37	55	8	0	4.51	4.28	Yr 9	2006	27	0	15	74	4	7	5.36	5.25
	2007	34	3	15	71	12	0	4.40	4.40		2007	35	11	17	66	6	0	5.54	5.54
Yr 8	2006	33	0	3	76	18	3	4.79	4.75	Yr 10	2006	28	0	18	64	14	4	5.91	5.75
	2007	37	5	30	54	8	3	4.97	4.97		2007	27	15	19	48	11	7	5.89	5.89



Reading

School Mean against State Mean

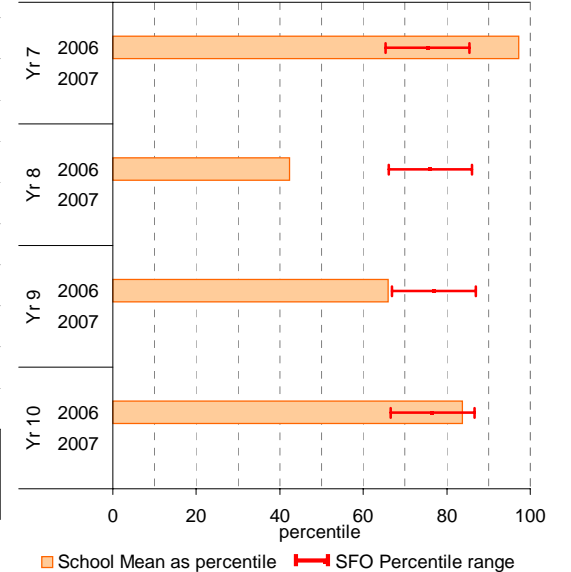
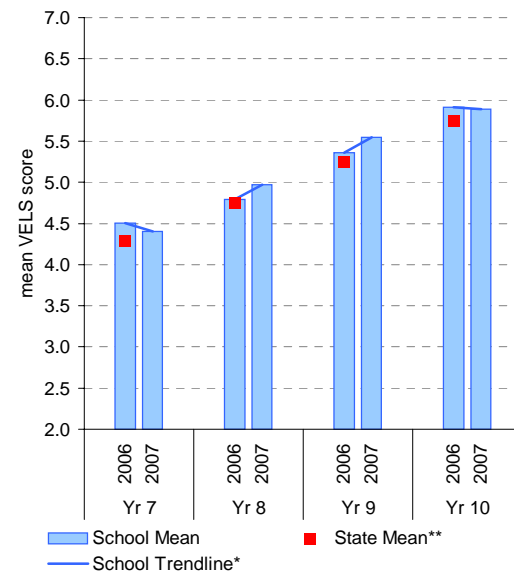
School Mean as percentile against SFO percentile range^



Writing

School Mean against State Mean

School Mean as percentile against SFO percentile range^



Teacher Judgments against the VELS - English (secondary)

School no: 7775

School name: Donald High School

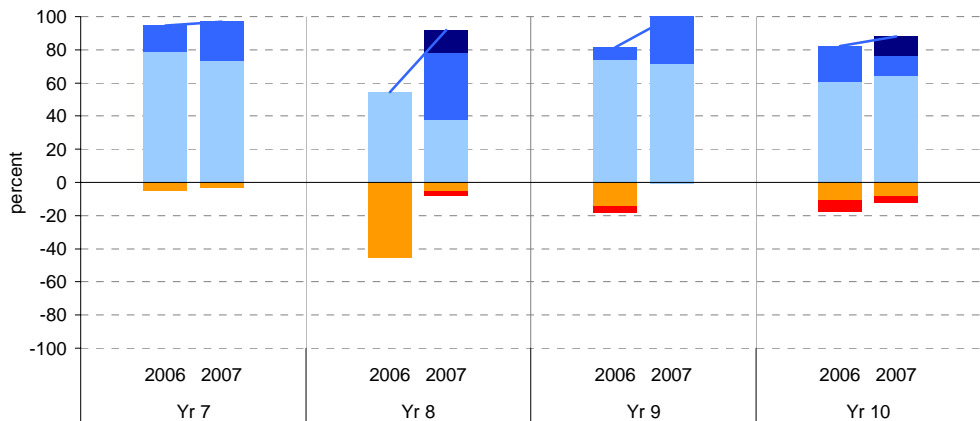
Source of data: Data retrieved electronically from CASES21.

Explanation: Teacher judgments of student progress against the VELS.

Notes: * The school trendline is being trialled. It is only plotted when there is data for each calendar year.
 ** In 2006, approx. 850 schools assessed their students against the 0.25 VELS scale. 2006 benchmarks are therefore based on a subset of schools. 2007 benchmarks will be calculated in August, when data from all schools has been submitted.
 ^ Percentiles for 2007 will be calculated in August, when data from all schools has been submitted.
 ^^ The cutoff between grades A and B changed in 2007. Further information is available on the following website: <http://www.education.vic.gov.au/studentlearning/studentreports/schools/whatsnew.htm>.

Speaking and Listening

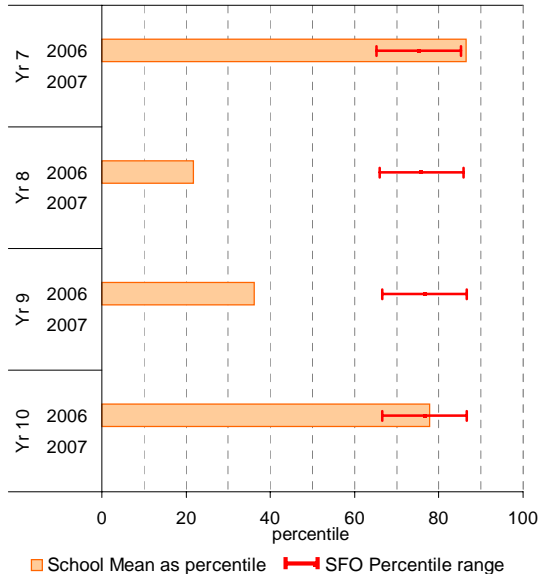
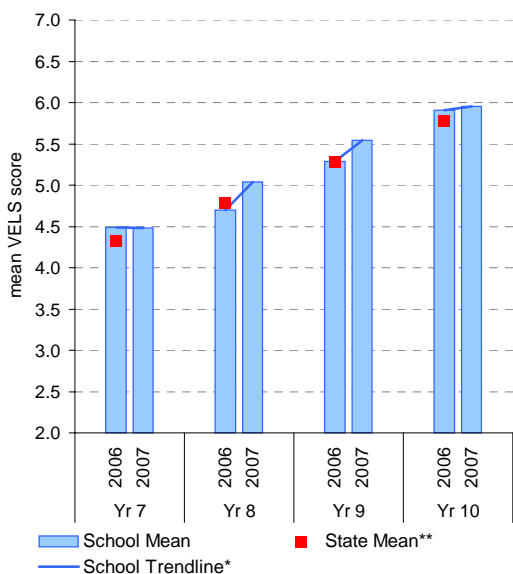
	total students	% of students by grade					Mean Score		total students	% of students by grade					Mean Score				
		A^	B^	C	D	E	School	State**		A^	B^	C	D	E	School	State**			
Yr 7	2006	38	0	16	79	5	0	4.49	4.33	Yr 9	2006	27	0	7	74	15	4	5.29	5.28
	2007	34	0	24	74	3	0	4.48	4.33		2007	35	0	29	71	0	0	5.54	5.54
Yr 8	2006	33	0	0	55	45	0	4.70	4.79	Yr 10	2006	28	0	21	61	11	7	5.91	5.78
	2007	37	14	41	38	5	3	5.04	4.79		2007	25	12	12	64	8	4	5.95	5.95



Speaking and Listening

School Mean against State Mean

School Mean as percentile against SFO percentile range^



Teacher Judgments against the VELS - Mathematics (secondary)

School no: 7775

School name: Donald High School

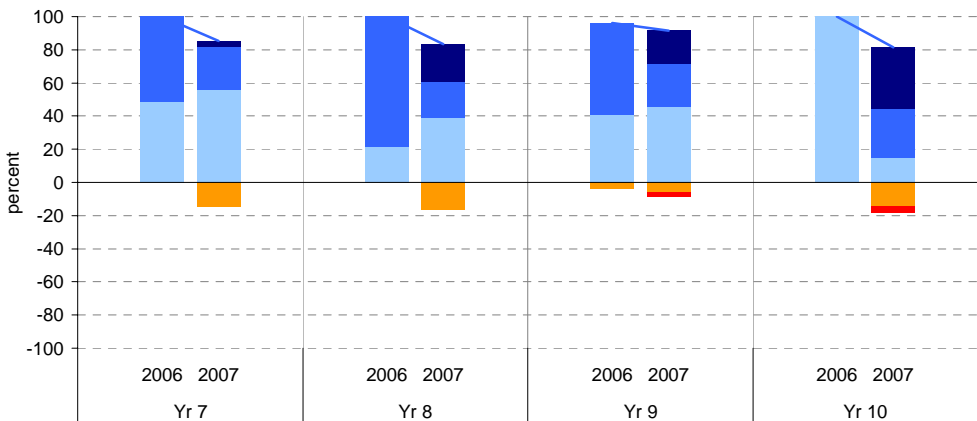
Source of data: Data retrieved electronically from CASES21.

Explanation: Teacher judgments of student progress against the VELS.

Notes: * The school trendline is being trialled. It is only plotted when there is data for each calendar year.
 ** In 2006, approx. 850 schools assessed their students against the 0.25 VELS scale. 2006 benchmarks are therefore based on a subset of schools. 2007 benchmarks will be calculated in August, when data from all schools has been submitted.
 ^ Percentiles for 2007 will be calculated in August, when data from all schools has been submitted.
 ^^ The cutoff between grades A and B changed in 2007. Further information is available on the following website:
<http://www.education.vic.gov.au/studentlearning/studentreports/schools/whatsnew.htm>.

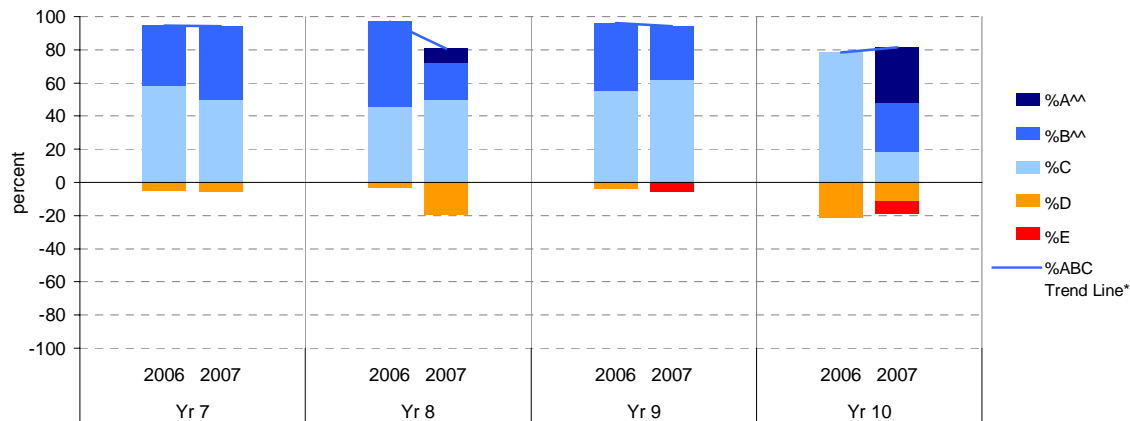
Measurement, Chance and Data

	total students	% of students by grade					Mean Score		
		A ^{^^}	B ^{^^}	C	D	E	School	State**	
Yr 7	2006	37	0	51	49	0	0	4.67	4.31
	2007	34	3	26	56	15	0	4.46	
Yr 8	2006	33	0	79	21	0	0	5.27	4.78
	2007	36	22	22	39	17	0	5.04	



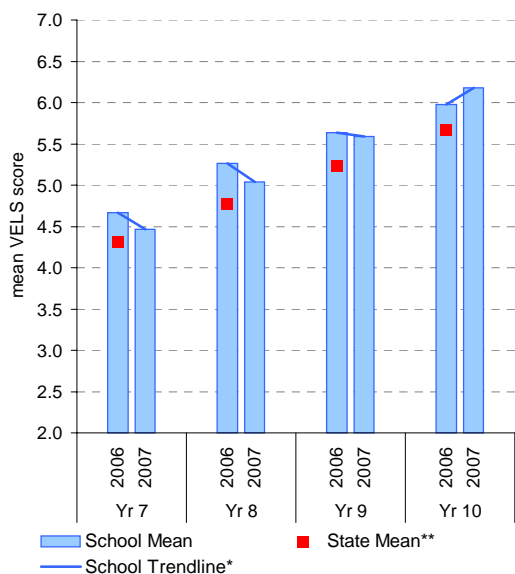
Structure

	total students	% of students by grade					Mean Score		
		A ^{^^}	B ^{^^}	C	D	E	School	State**	
Yr 7	2006	36	0	36	58	6	0	4.57	4.30
	2007	34	0	44	50	6	0	4.52	
Yr 8	2006	33	0	52	45	3	0	5.14	4.74
	2007	36	8	22	50	19	0	4.93	

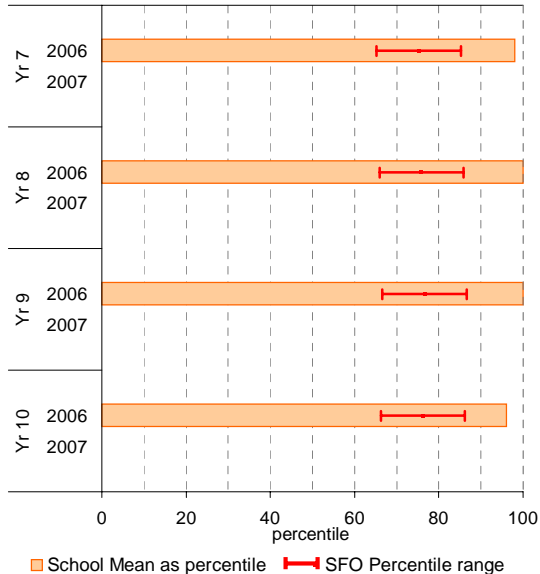


Measurement, Chance and Data

School Mean against State Mean

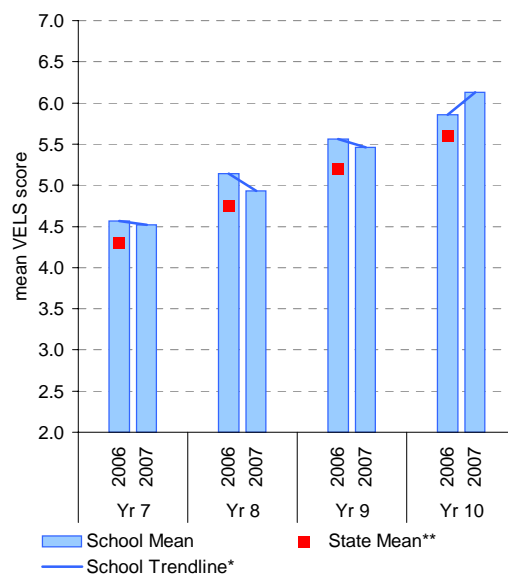


School Mean as percentile against SFO percentile range

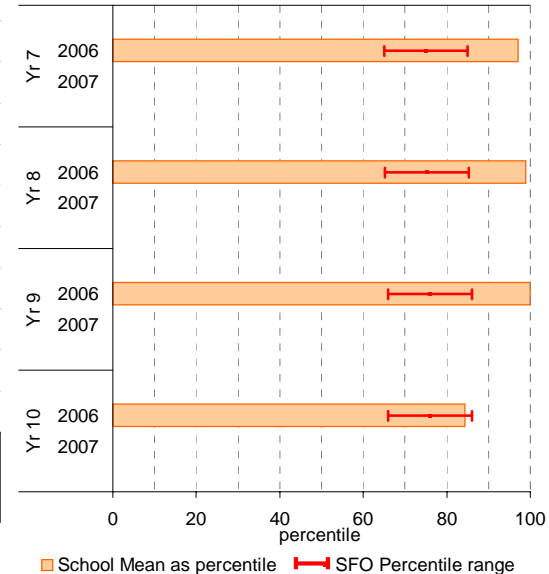


Structure

School Mean against State Mean



School Mean as percentile against SFO percentile range



Teacher Judgments against the VELS - English (secondary)

School no: 7775
School name: Donald High School
Source of data: Data retrieved electronically from CASES21.
Explanation: Teacher judgments of student progress against the VELS.

Reading

Year Level	Year	Total ¹	Assessed ²	Level 1			Level 2			Level 3			Level 4			Level 5			Level 6			Level 6E			School mean	State mean*	Difference between school and state mean*		
				0.00	0.50	1.00	1.25	1.50	1.75	2.00	2.25	2.50	2.75	3.00	3.25	3.50	3.75	4.00	4.25	4.50	4.75	5.00	5.25	5.50				5.75	6.00
yr7	2007	34	34										4			9	17	4									4.40		
yr7	2006	38	38										4			9	18	7									4.43	4.32	0.12
yr8	2007	37	37							1						2	2	6	11		7	5	3				5.00		
yr7	2005																												
yr8	2006	33	33													4	21	8									4.78	4.78	0.00
yr9	2007	35	35															4		3	14	9	5				5.56		
yr7	2004																												
yr8	2005																												
yr9	2006	27	27													3		3		6	15					5.28	5.26	0.01	
yr10	2007	27	27									1					1		1	1	3	13		1	3	3	5.96		
yr8	2004																												
yr9	2005																												
yr10	2006	28	28														1			4	5	13		5			5.89	5.77	0.13
yr9	2004																												
yr10	2005																												
yr10	2004																												

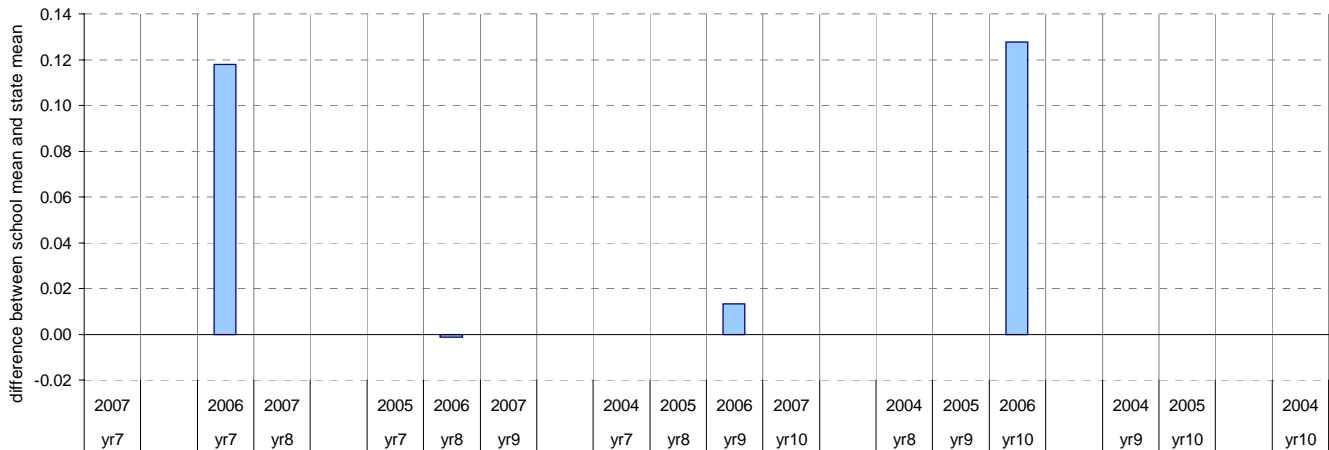
shading indicates a 'C' grade (at the expected standard) on the VELS scale.

¹ Students in group

² Total assessed

* Note: In 2006, approx. 850 schools assessed their students against the 0.25 VELS scale. 2006 benchmarks are therefore based on a subset of schools. 2007 benchmarks will be calculated in August, when data from all schools has been submitted.

Difference between school mean and state mean*, by cohort group



Teacher Judgments against the VELS - English (secondary)

School no: 7775
School name: Donald High School
Source of data: Data retrieved electronically from CASES21.
Explanation: Teacher judgments of student progress against the VELS.

Writing

Year Level	Year	Total ¹	Assessed ²	Level 1			Level 2			Level 3			Level 4			Level 5			Level 6			Level 6E			School mean	State mean*	Difference between school and state mean*		
				0.00	0.50	1.00	1.25	1.50	1.75	2.00	2.25	2.50	2.75	3.00	3.25	3.50	3.75	4.00	4.25	4.50	4.75	5.00	5.25	5.50				5.75	6.00
yr7	2007	34	34										1	3	12	12	5		1								4.40		
yr7	2006	38	38											3	7	14	14										4.51	4.28	0.22
yr8	2007	37	37								1				3	6	14		11	1	1						4.97		
yr7	2005																												
yr8	2006	33	33										1		1	5	12	13		1							4.79	4.75	0.03
yr9	2007	35	35														2		4	19	6	4					5.54		
yr7	2004																												
yr8	2005																												
yr9	2006	27	27												1	1	1		7	13	4						5.36	5.25	0.12
yr10	2007	27	27									1					1		3	5	8		5	3	1		5.89		
yr8	2004																												
yr9	2005																												
yr10	2006	28	28														1		4	4	14		4	1			5.91	5.75	0.16
yr9	2004																												
yr10	2005																												
yr10	2004																												

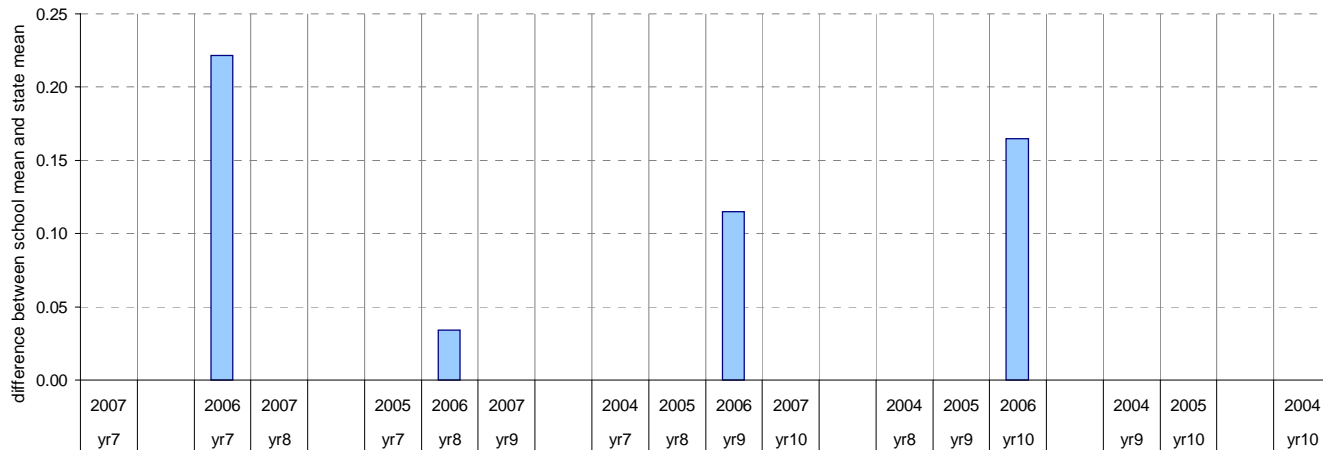
shading indicates a 'C' grade (at the expected standard) on the VELS scale.

¹ Students in group

² Total assessed

* Note: In 2006, approx. 850 schools assessed their students against the 0.25 VELS scale. 2006 benchmarks are therefore based on a subset of schools. 2007 benchmarks will be calculated in August, when data from all schools has been submitted.

Difference between school mean and state mean*, by cohort group



Teacher Judgments against the VELS - English (secondary)

School no: 7775
 School name: Donald High School
 Source of data: Data retrieved electronically from CASES21.
 Explanation: Teacher judgments of student progress against the VELS.

Speaking and Listening

Year Level	Year	Total ¹	Assessed ²	Level 1			Level 2			Level 3			Level 4			Level 5			Level 6			Level 6E			School mean	State mean*	Difference between school and state mean*		
				0.00	0.50	1.00	1.25	1.50	1.75	2.00	2.25	2.50	2.75	3.00	3.25	3.50	3.75	4.00	4.25	4.50	4.75	5.00	5.25	5.50				5.75	6.00
yr7	2007	34	34											1	9	16	8										4.48		
yr7	2006	38	38											2	4	26	6										4.49	4.33	0.16
yr8	2007	37	37								1				1	1	7	7	15	4	1						5.04		
yr7	2005																												
yr8	2006	33	33												2	13	8	10									4.70	4.79	-0.09
yr9	2007	35	35																4	21	10						5.54		
yr7	2004																												
yr8	2005																												
yr9	2006	27	27													1	4	13	7	2						5.29	5.28	0.01	
yr10	2007	26	25													1			2	6	10	3	3			5.95			
yr8	2004																												
yr9	2005																												
yr10	2006	28	28														2	1	2	2	15	5	1			5.91	5.78	0.13	
yr9	2004																												
yr10	2005																												
yr10	2004																												

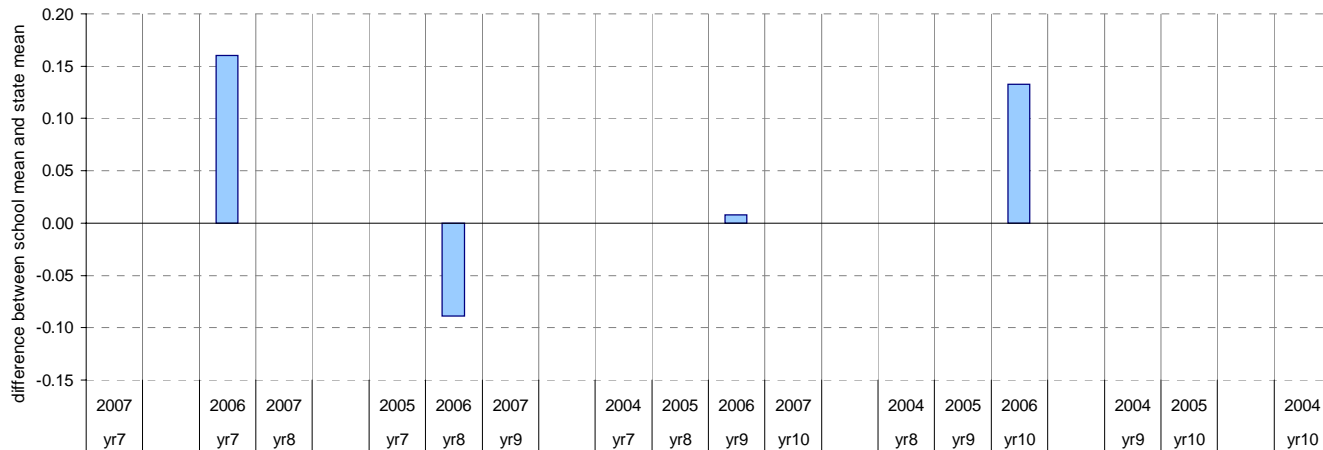
shading indicates a 'C' grade (at the expected standard) on the VELS scale.

¹ Students in group

² Total assessed

* Note: In 2006, approx. 850 schools assessed their students against the 0.25 VELS scale. 2006 benchmarks are therefore based on a subset of schools. 2007 benchmarks will be calculated in August, when data from all schools has been submitted.

Difference between school mean and state mean*, by cohort group



Teacher Judgments against the VELS - Mathematics (secondary)

School no: 7775
 School name: Donald High School
 Source of data: Data retrieved electronically from CASES21.
 Explanation: Teacher judgments of student progress against the VELS.

Measurement, Chance and Data

Year Level	Year	Total ¹	Assessed ²	Level 1			Level 2			Level 3			Level 4			Level 5			Level 6			Level 6E			School mean	State mean*	Difference between school and state mean*			
				0.00	0.50	1.00	1.25	1.50	1.75	2.00	2.25	2.50	2.75	3.00	3.25	3.50	3.75	4.00	4.25	4.50	4.75	5.00	5.25	5.50				5.75	6.00	6.25
yr7	2007	34	34											5	6	13	9	1										4.46		
yr7	2006	37	37												2	16	11	8										4.67	4.31	0.36
yr8	2007	36	36												6	6	8	8	8								5.04			
yr7	2005																													
yr8	2006	33	33													4	3	13	13								5.27	4.78	0.49	
yr9	2007	35	35												1		2	2	14	9	7						5.59			
yr7	2004																													
yr8	2005																													
yr9	2006	27	27															1	5	6	8	7					5.64	5.24	0.40	
yr10	2007	27	27															1		4	1	3	8	6	4		6.18			
yr8	2004																													
yr9	2005																													
yr10	2006	28	28																			3	25				5.97	5.66	0.31	
yr9	2004																													
yr10	2005																													
yr10	2004																													

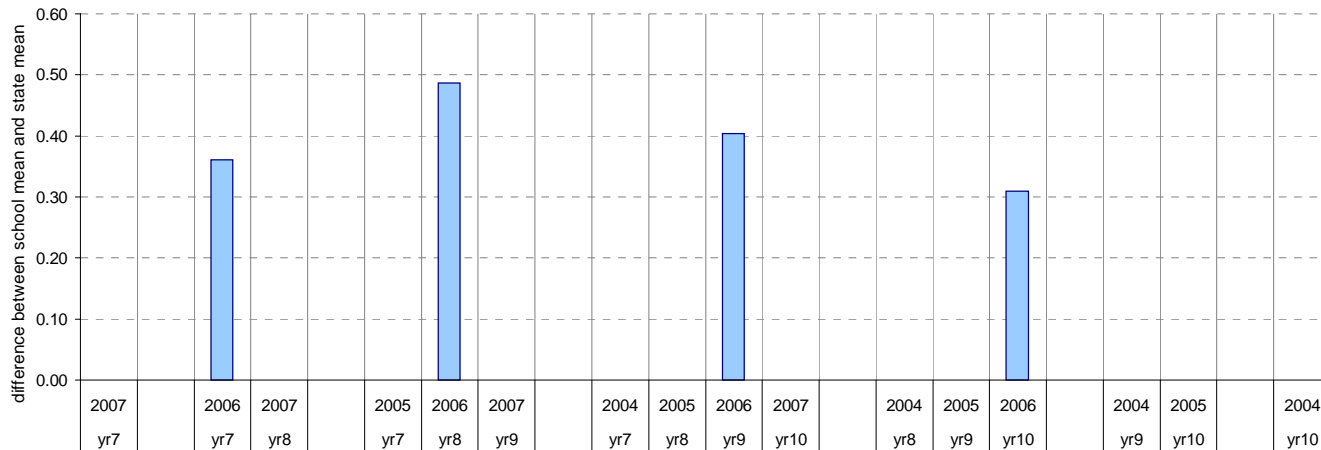
shading indicates a 'C' grade (at the expected standard) on the VELS scale.

¹ Students in group

² Total assessed

* Note: In 2006, approx. 850 schools assessed their students against the 0.25 VELS scale. 2006 benchmarks are therefore based on a subset of schools. 2007 benchmarks will be calculated in August, when data from all schools has been submitted.

Difference between school mean and state mean*, by cohort group



Teacher Judgments against the VELS - Mathematics (secondary)

School no: 7775
School name: Donald High School
Source of data: Data retrieved electronically from CASES21.
Explanation: Teacher judgments of student progress against the VELS.

Structure

Year Level	Year	Total ¹	Assessed ²	Level 1				Level 2				Level 3				Level 4				Level 5				Level 6				Level 6E			School mean	State mean*	Difference between school and state mean*		
				0.00	0.50	1.00	1.25	1.50	1.75	2.00	2.25	2.50	2.75	3.00	3.25	3.50	3.75	4.00	4.25	4.50	4.75	5.00	5.25	5.50	5.75	6.00	6.25	6.50	6.75						
yr7	2007	34	34												2	8	9	15															4.52		
yr7	2006	36	36												2	3	18	9	4													4.57	4.30	0.27	
yr8	2007	36	36													1	6	9	9	8	3											4.93			
yr7	2005																																		
yr8	2006	33	33													1	5	10		8	9											5.14	4.74	0.40	
yr9	2007	35	34													2				8	13	11									5.46				
yr7	2004																																		
yr8	2005																																		
yr9	2006	27	27															1	7	8	6	5									5.56	5.21	0.36		
yr10	2007	27	27														2			3	1	4	8	6	3					6.13					
yr8	2004																																		
yr9	2005																																		
yr10	2006	28	28																	1	5	3	19								5.86	5.60	0.25		
yr9	2004																																		
yr10	2005																																		
yr10	2004																																		

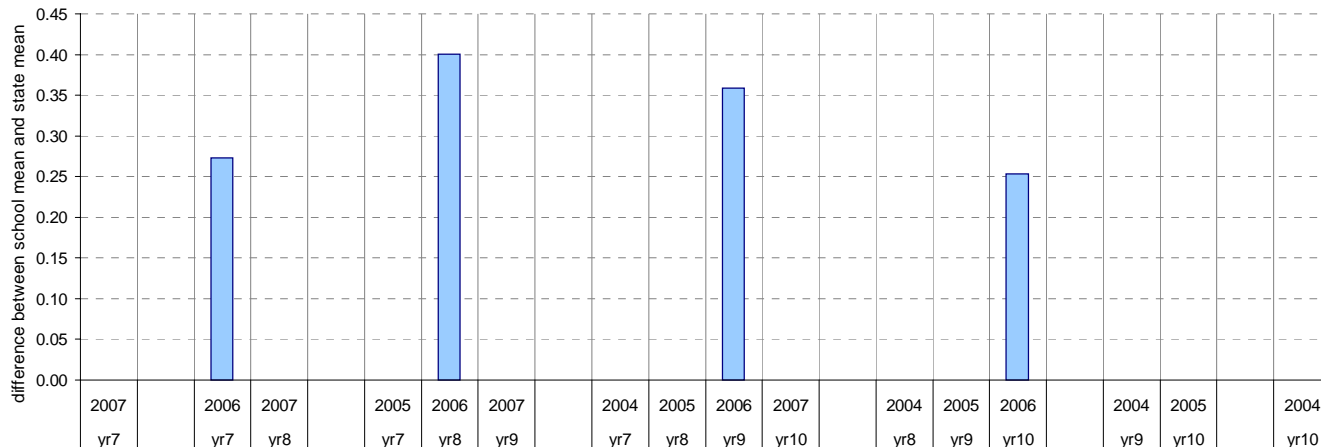
shading indicates a 'C' grade (at the expected standard) on the VELS scale.

¹ Students in group

² Total assessed

* Note: In 2006, approx. 850 schools assessed their students against the 0.25 VELS scale. 2006 benchmarks are therefore based on a subset of schools. 2007 benchmarks will be calculated in August, when data from all schools has been submitted.

Difference between school mean and state mean*, by cohort group



AIM Year 7 and 9: Reading

School no: 7775

School name: Donald High School

Source of data: Victorian Curriculum and Assessment Authority.

Explanation: The Achievement Improvement Monitor (AIM) is a statewide assessment program conducted each year for students in Years 3, 5, 7 and 9. For more detailed AIM data, refer to the AIM Data Service website at <http://aimds.vcaa.vic.edu.au>.

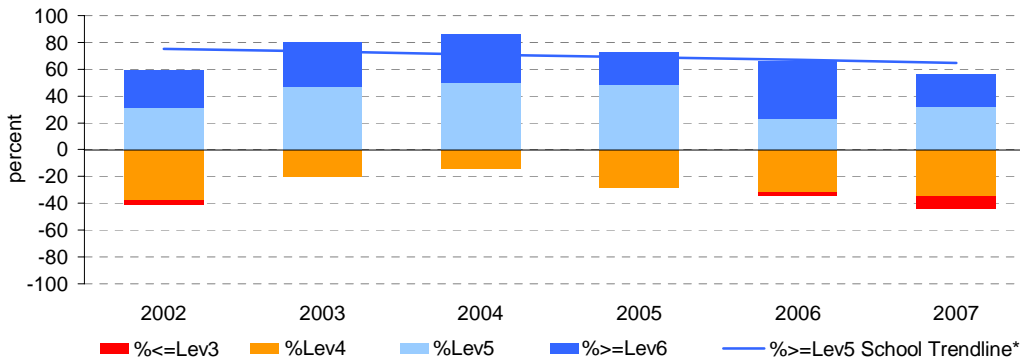
Notes: * The school trendline is being trialled. It is only plotted when there is data for each calendar year.

** % student participation = (students who participated in AIM / Feb enrolments) * 100

Year 7

	student participation		% of students by VELs level							Mean CSF / VELs Score	
	(n)	(%)**	Lev1	Lev2	Lev3	Lev4	Lev5	Lev6	Lev6E	School	State
2002	32	103	0	0	3	38	31	28	0	4.3	4.1
2003	30	94	0	0	0	20	47	33	0	4.6	4.1
2004	22	85	0	0	0	14	50	36	0	4.6	4.2
2005	33	94	0	0	0	27	48	24	0	4.6	4.2
2006	35	97	0	0	3	31	23	43	0	4.5	4.2
2007	34	94	0	0	9	35	32	24	0	4.3	4.1

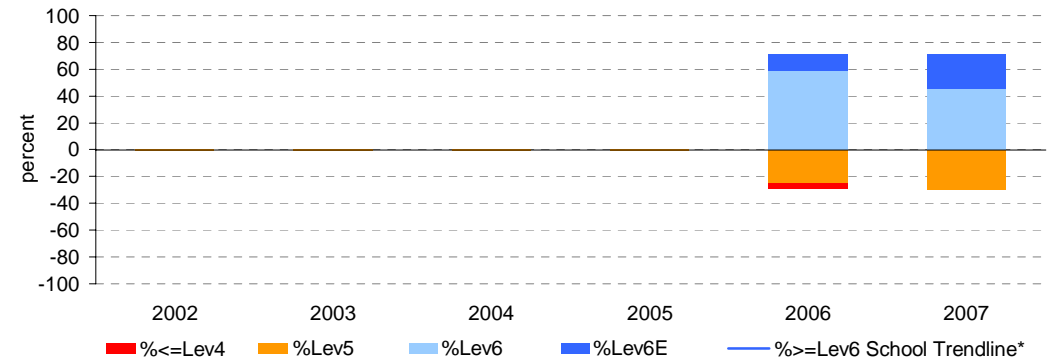
Proportion of students by VELs level



Year 9

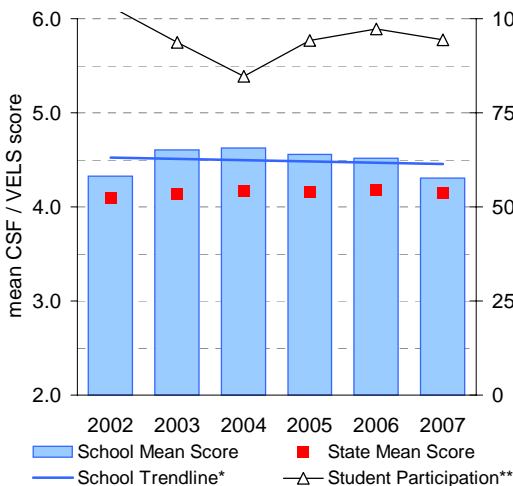
	student participation		% of students by VELs level							Mean CSF / VELs Score	
	(n)	(%)**	Lev1	Lev2	Lev3	Lev4	Lev5	Lev6	Lev6E	School	State
2002											
2003											
2004											
2005											
2006	24	86	0	0	0	4	25	58	13	5.2	5.1
2007	31	94	0	0	0	0	29	45	26	5.4	5.1

Proportion of students by VELs level

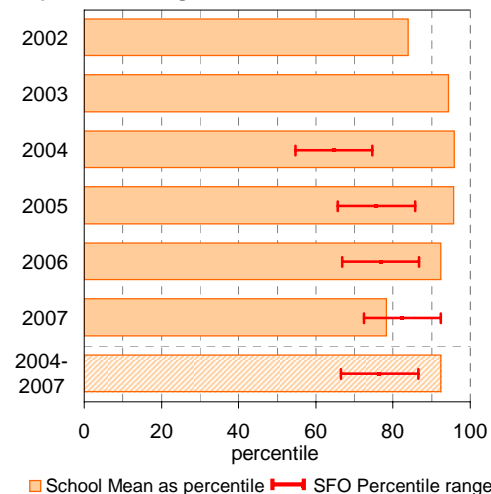


Year 7

School Mean against State Mean, including Participation

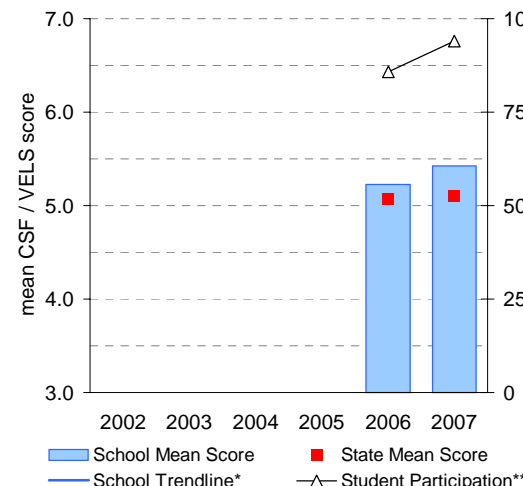


School Mean as percentile against SFO percentile range

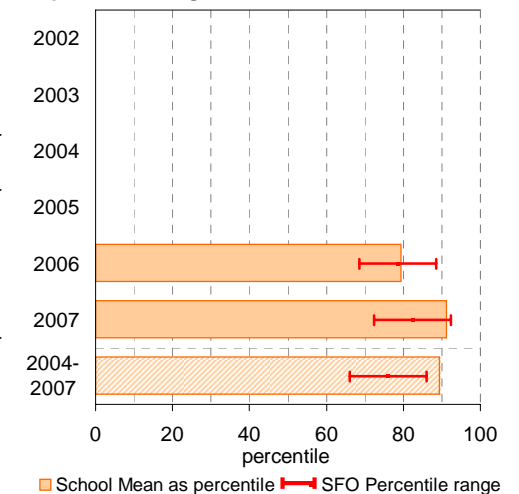


Year 9

School Mean against State Mean, including Participation



School Mean as percentile against SFO percentile range



AIM Year 7 and 9: Mathematics

School no: 7775

School name: Donald High School

Source of data: Victorian Curriculum and Assessment Authority.

Explanation: The Achievement Improvement Monitor (AIM) is a statewide assessment program conducted each year for students in Years 3, 5, 7 and 9. For more detailed AIM data, refer to the AIM Data Service website at <http://aimds.vcaa.vic.edu.au>.

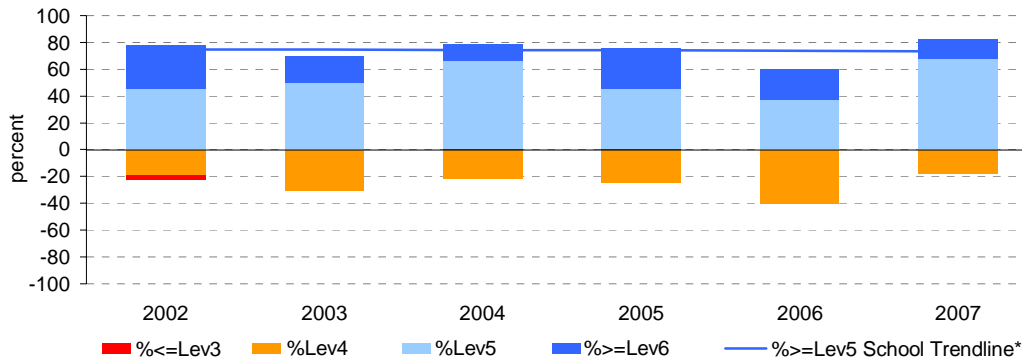
Notes: * The school trendline is being trialled. It is only plotted when there is data for each calendar year.

** % student participation = (students who participated in AIM / Feb enrolments) * 100

Year 7

	student participation		% of students by VELs level							Mean CSF / VELs Score	
	(n)	(%)**	Lev1	Lev2	Lev3	Lev4	Lev5	Lev6	Lev6E	School	State
2002	31	100	0	0	3	19	45	32	0	4.4	4.1
2003	30	94	0	0	0	30	50	20	0	4.4	4.0
2004	24	92	0	0	0	21	67	13	0	4.4	4.0
2005	33	94	0	0	0	24	45	30	0	4.5	4.0
2006	35	97	0	0	0	40	37	23	0	4.3	4.0
2007	34	94	0	0	0	18	68	15	0	4.4	4.1

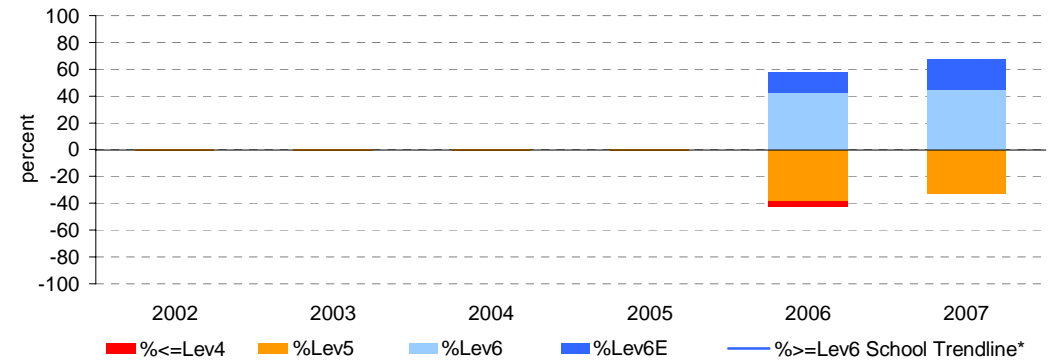
Proportion of students by VELs level



Year 9

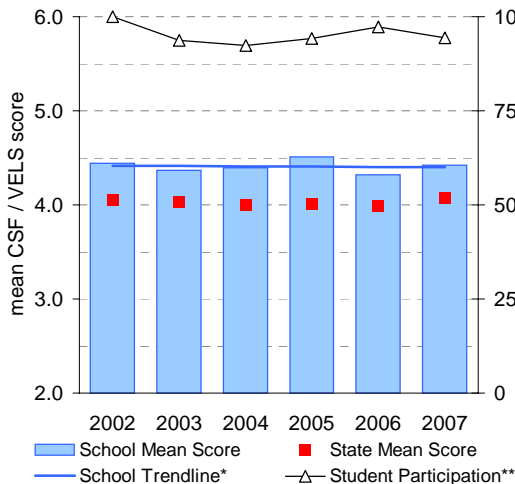
	student participation		% of students by VELs level							Mean CSF / VELs Score	
	(n)	(%)**	Lev1	Lev2	Lev3	Lev4	Lev5	Lev6	Lev6E	School	State
2002											
2003											
2004											
2005											
2006	26	93	0	0	0	4	38	42	15	5.1	4.8
2007	31	94	0	0	0	0	32	45	23	5.4	4.8

Proportion of students by VELs level

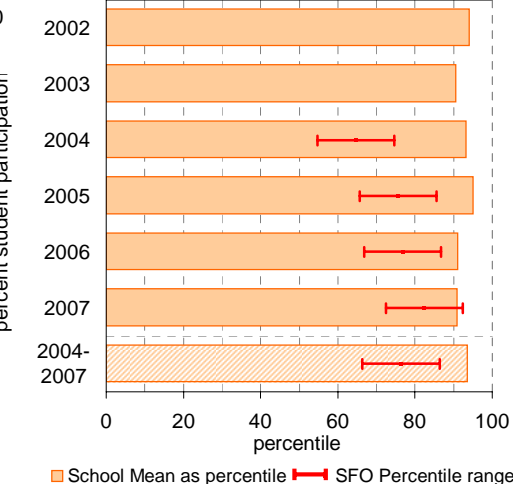


Year 7

School Mean against State Mean, including Participation

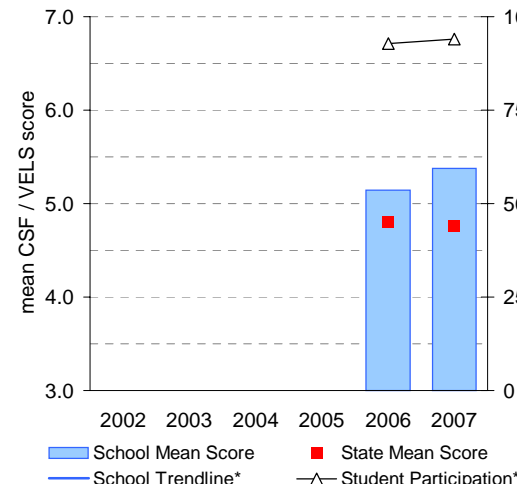


School Mean as percentile against SFO percentile range

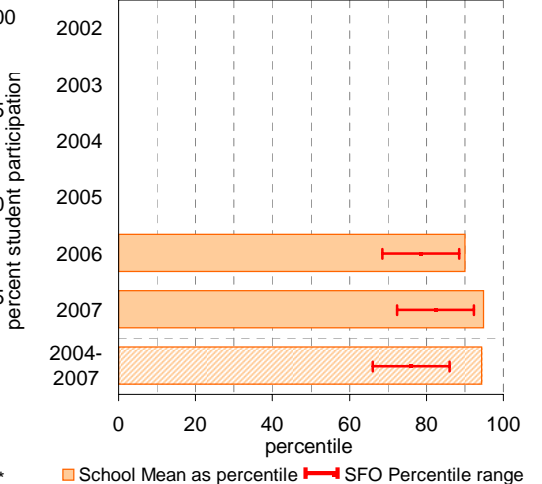


Year 9

School Mean against State Mean, including Participation



School Mean as percentile against SFO percentile range



VCE

School no: 7775

School name: Donald High School

Explanation: Only 2007 studies, which at least 1 student completed, are included.

Source of data: Victorian Curriculum and Assessment Authority.

Notes:	2003		2004		2005		2006		2007	
	No. of students	school mean	No. of students	school mean	No. of students	school mean	No. of students	school mean	No. of students	school mean
- After allstudy, English, Further Maths and Maths Methods, studies are listed in descending order of the number of students in the latest year.										
- From 2005, VET study scores are included.										
- From 2005, data is based on 'reported' study scores, not 'achieved' study scores.										
allstudy		32.7		34.4		33.1		33.1		31.5
English EN01	23	31.0	23	34.1	16	31.6	17	31.0	25	29.4
Further Mathematics MA07	18	34.4	12	32.5	17	36.4	11	34.3	15	32.7
Mathematical Methods MA08	5	31.6	11	31.8	5	31.8	7	30.9	10	28.6
Legal Studies LS03	16	31.6	7	35.6	7	29.9	14	32.8	19	32.2
Health & Human Dev. HH03	8	34.9	14	34.4	7	34.9	11	35.4	15	31.8
Physical Ed. PE03	8	32.3	7	40.3	6	37.5			9	32.6
Studio Arts SA03			6	37.2	1	35.0	7	34.6	7	30.6
Chemistry CH03	3	28.7	6	29.8	10	29.6	3	35.7	6	29.7
Economics EC03	7	30.3	7	34.6			4	27.8	6	32.3
Geography GE03	5	33.6	5	30.8					6	36.5
IT Applications IT02	6	34.2	7	34.6	7	32.1	6	30.0	6	31.3
Accounting AC03	14	37.1	10	40.2	9	39.1	8	39.1	5	37.2
Biology BI03	6	31.2	9	34.2	4	37.0	5	35.8	4	32.8
History (Revolutions) HI13					5	28.2	2	33.0	4	31.5
Physics PH03	4	29.8	4	31.8	2	30.5	3	26.0	3	29.3
Specialist Mathematics MA09									2	26.0
Hospitality (Comm. Cook) (VCE VET) HS07									1	35.0

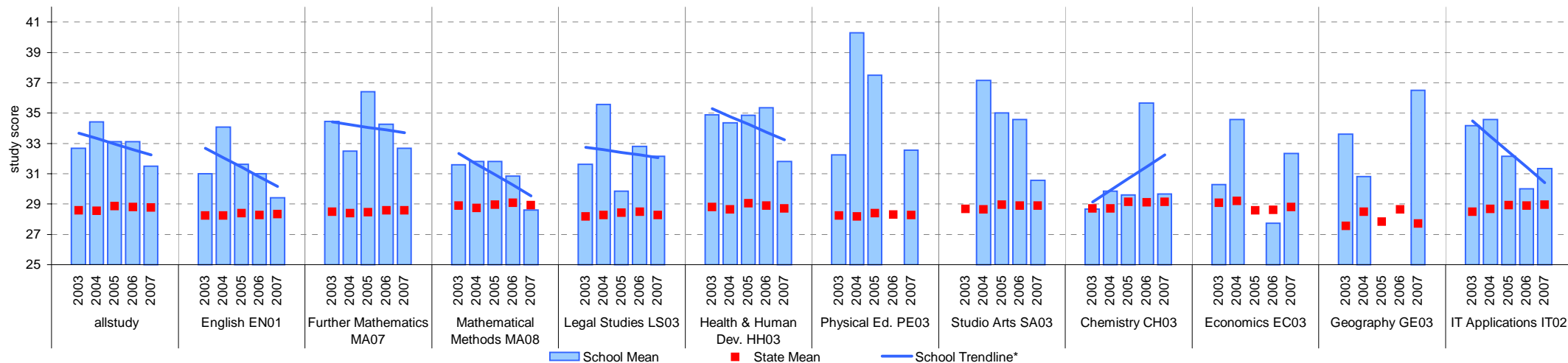
VCE

School no: 7775

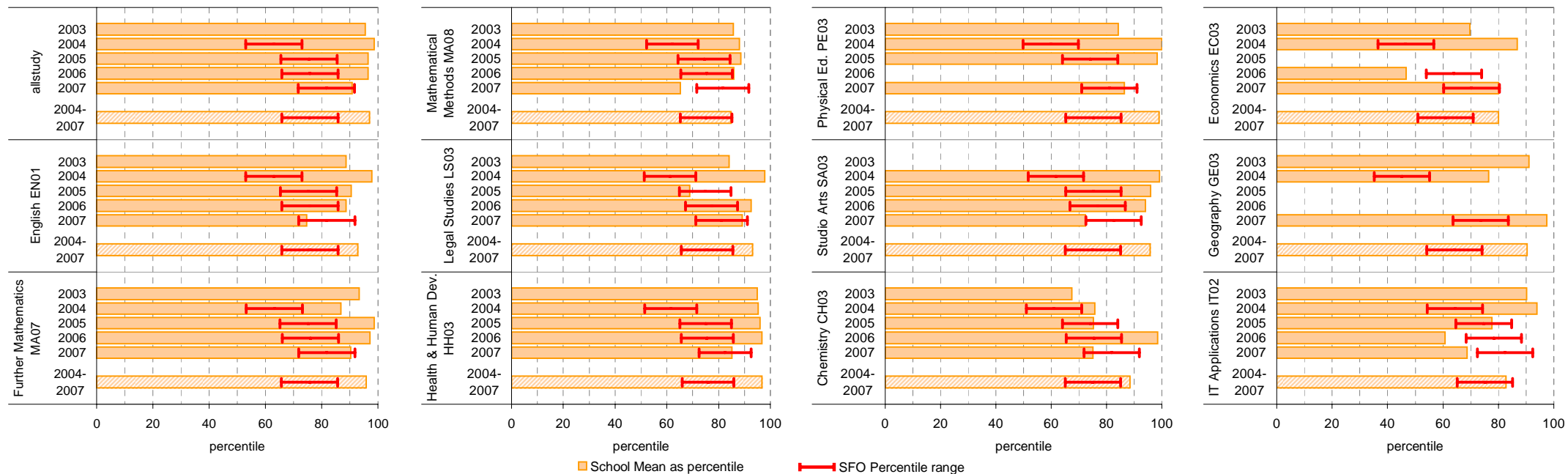
School name: Donald High School

Source of data: Victorian Curriculum and Assessment Authority.

School Mean against State Mean



School Mean as percentile against SFO percentile range



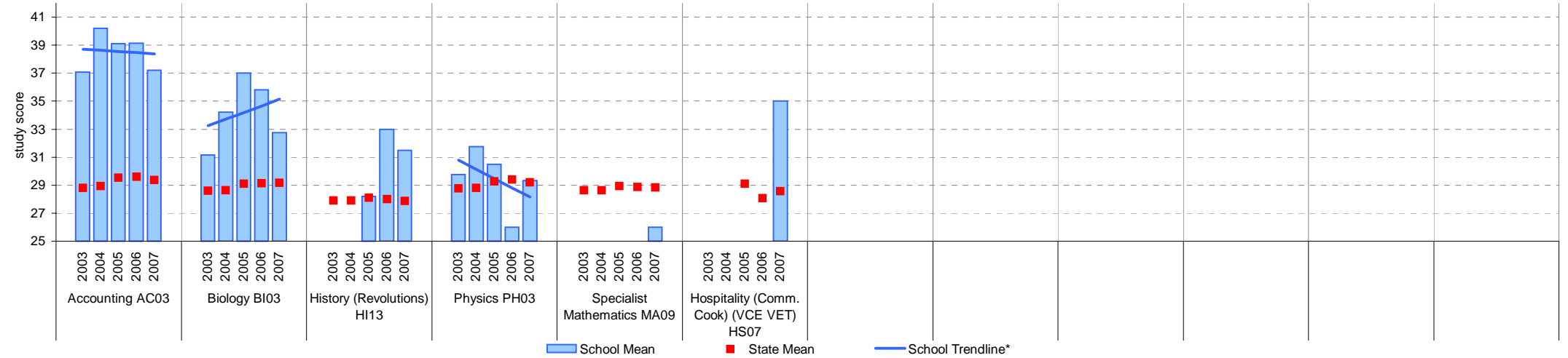
VCE (cont'd)

School no: 7775

School name: Donald High School

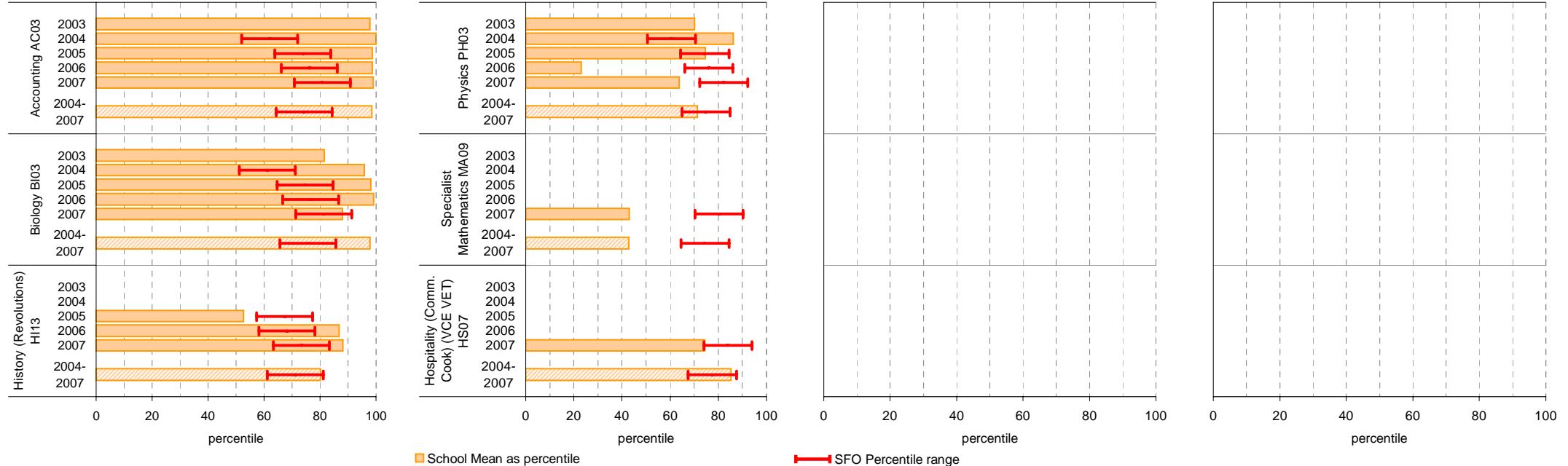
Source of data: Victorian Curriculum and Assessment Authority.

School Mean against State Mean



Notes: * The school trendline is being trialed. It is only plotted when there is data for each calendar year.
 - After allstudy, EN01, MA07 and MA08, the remaining studies are charted in order of the number of students who completed that study in 2007, from highest to lowest.
 - From 2005, VET study scores are included.
 - From 2005, data is based on 'reported' study scores, not the 'achieved' study scores.

School Mean as percentile against SFO percentile range

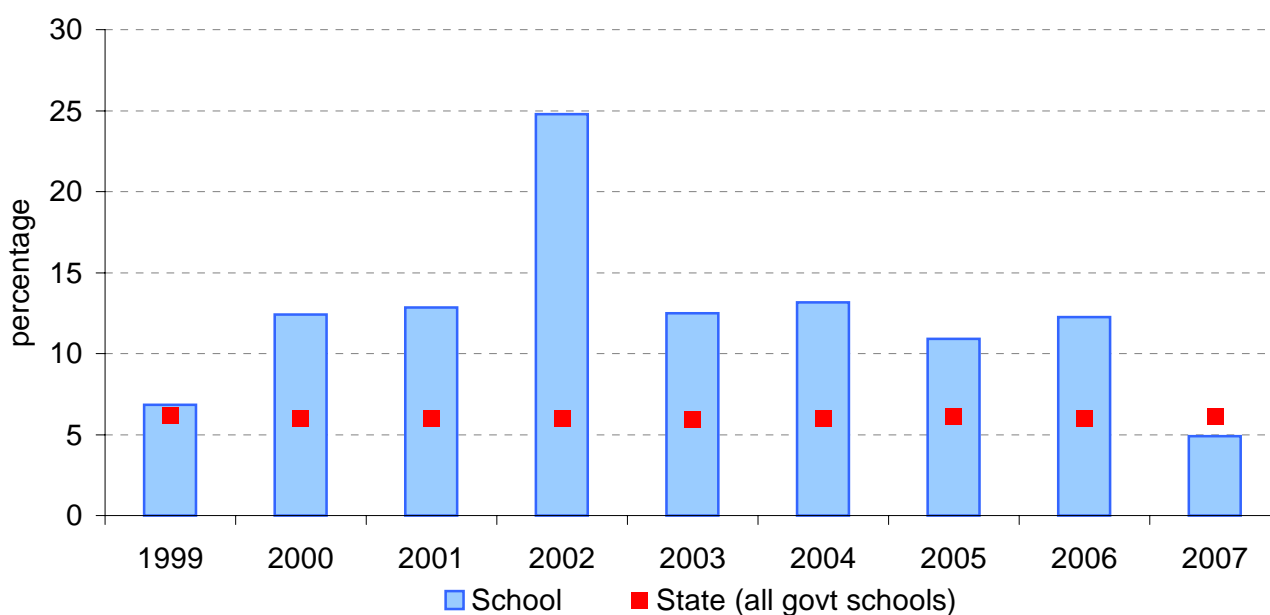


VCE: Study Scores of 40 or more

School no:	7775
School name:	Donald High School
Explanation:	Of all VCE study scores, the percentage that were 40 or more.
Source of data:	Victorian Curriculum and Assessment Authority.

Year	School		State (all govt schools)
	Total study scores	% 40 or more*	% 40 or more
1999	117	6.8	6.2
2000	153	12.4	6.0
2001	171	12.9	6.0
2002	121	24.8	6.0
2003	136	12.5	5.9
2004	129	13.2	6.0
2005	101	10.9	6.1
2006	98	12.2	6.0
2007	143	4.9	6.1

VCE percentage of study scores of 40 or more*, 1999 to 2007



Note:

- * Prior to 2005, this data may not match the information published in *The Age*. Data presented on this page prior to 2005 does not include study scores from the small number of VET studies that are given study scores.
- From 2005, VET study scores are included.
- From 2005, data is based on 'reported' study scores, not 'achieved' study scores.

VET

School no: 7775
School name: Donald High School
Source of data: Victorian Curriculum and Assessment Authority.

More detailed information is available on the VASS system provided by VCAA.

Notes: * - The school trendline is being trialled. It is only plotted when there is data for each calendar year.

1 - UOC = Unit(s) of Competence.

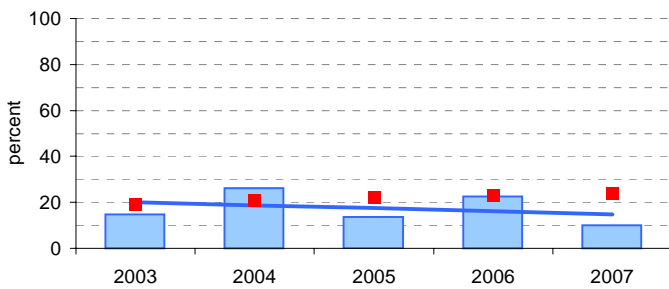
2 - % students based on yr10, 11 & 12 August enrolments.

3 - Only includes students undertaking at least 1 UOC.

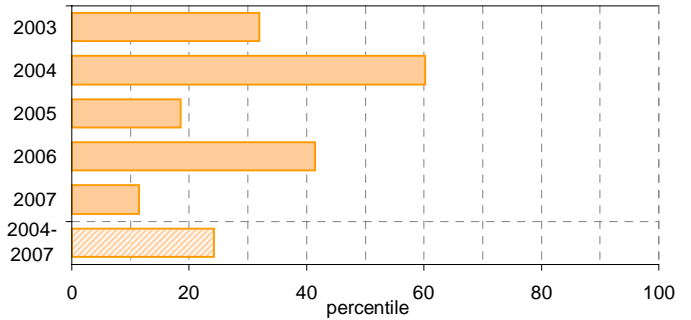
Participation						Completion			
School					State		School		State
Year	Level	No. students undertaking at least 1 UOC ¹	% students ² undertaking at least 1 UOC ¹	Avg no. UOCs ¹ undertaken per student ³	% students ² undertaking at least 1 UOC ¹	Avg no. UOCs ¹ undertaken per student ³	No. UOCs ¹ with satisfactory result	% UOCs ¹ with satisfactory result	% UOCs ¹ with satisfactory result
2003	10	1	5.6	10	18.8	11.8	10	100	73.5
	11	6	20.8	8.8			46	86.8	
	12	-	-	-			-	-	
	10-12	7	14.9	9			56	88.9	
2004	10	-	-	-	20.7	11.9	-	-	71.3
	11	6	26.1	8.7			32	61.5	
	12	-	-	-			-	-	
	10-12	6	26.1	8.7			32	61.5	
2005	10	-	-	-	22.3	11.9	-	-	72.6
	11	4	16.1	11.3			34	75.6	
	12	2	10.5	11.5			23	100	
	10-12	6	13.7	11.3			57	83.8	
2006	10	-	-	-	23.0	12.0	-	-	75.6
	11	7	22.6	9.1			55	85.9	
	12	-	-	-			-	-	
	10-12	7	22.6	9.1			55	85.9	
2007	10	-	-	-	23.8	11.7	-	-	76.4
	11	4	16	10.3			35	85.4	
	12	1	4	6			6	100	
	10-12	5	10	9.4			41	87.2	

Participation - % Yr10-12 students² undertaking at least 1 UOC¹

School against State

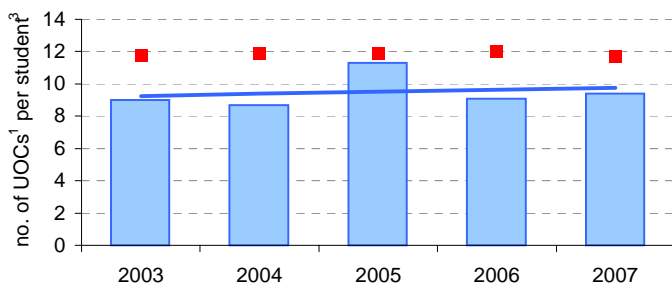


School as percentile

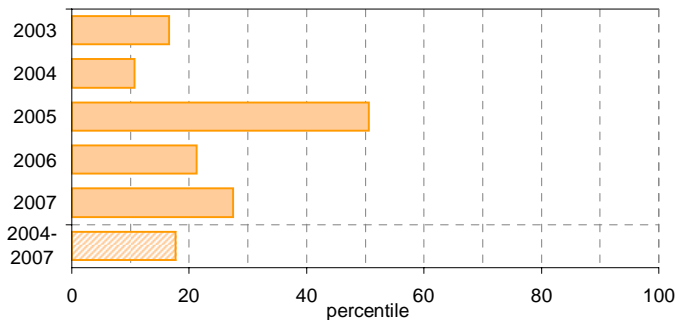


Avg no. UOCs¹ undertaken per student³

School Mean against State Mean

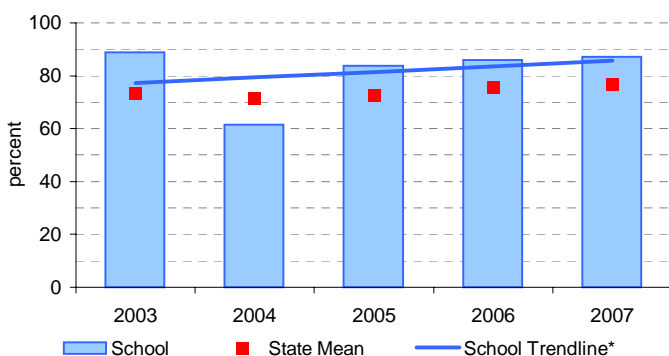


School Mean as percentile

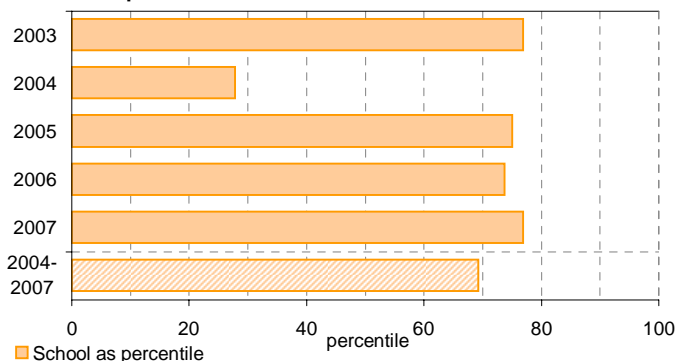


Completion - % UOCs¹ with satisfactory result

School against State



School as percentile



VCAL

School no: 7775
School name: Donald High School
Explanation:

'No. of VCAL credits undertaken' is calculated by summing the number of credits undertaken by each VCAL student across all VCAL students.

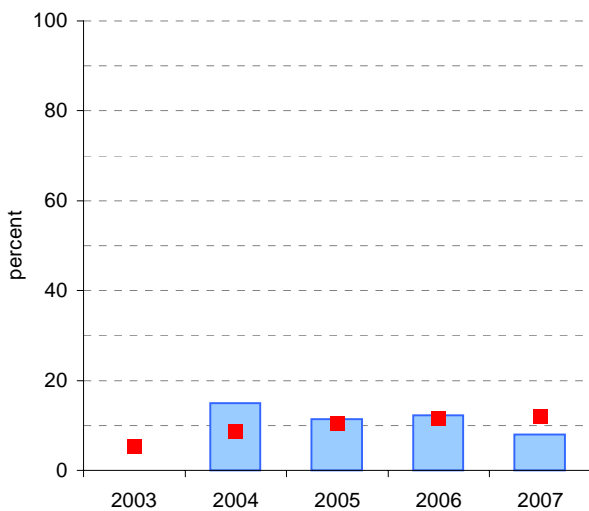
The data contained in this page is for all VCAL strands and levels combined.

Source of data: Victorian Curriculum and Assessment Authority.
 More detailed information is available on the VASS system provided by VCAA.

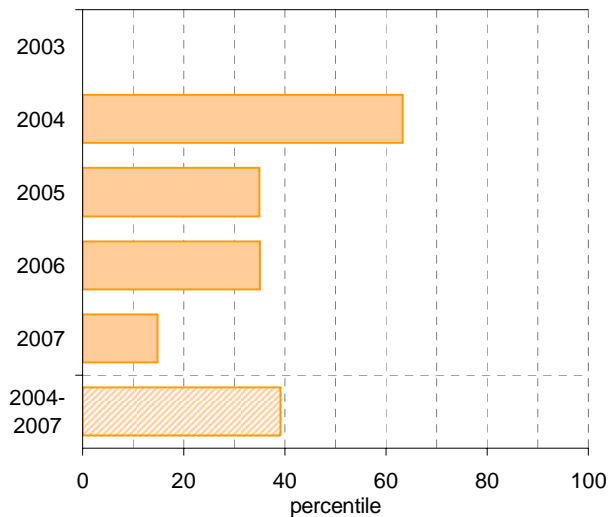
Notes: * - The school trendline is being trialled. It is only plotted when there is data for each calendar year.
 1 - No. and % students based on yr11 & 12 August enrolments.

Participation						Completion		
School					State	School		State
Year	Year Level	No. students ¹	No. students undertaking VCAL	% students ¹ undertaking VCAL	% students ¹ undertaking VCAL	No. VCAL unit credits undertaken	% satisfactory completion of VCAL credits	% satisfactory completion of VCAL credits
2003	11-12	-	-	-	5.2	-	-	73.6
2004	11-12	47	7	14.9	8.6	26	100.0	70.4
2005	11-12	43.9	5	11.4	10.4	20	100.0	72.9
2006	11-12	49	6	12.2	11.5	24	75.0	77.7
2007	11-12	25	2	8.0	12.0	4	100.0	76.5

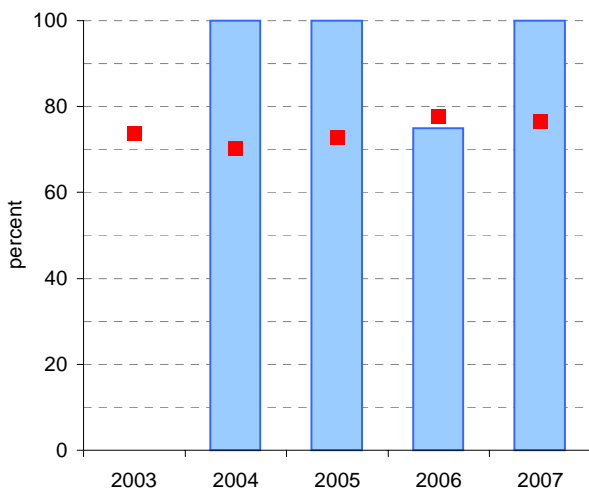
Participation - % Yr11-12 students¹ undertaking VCAL School against State



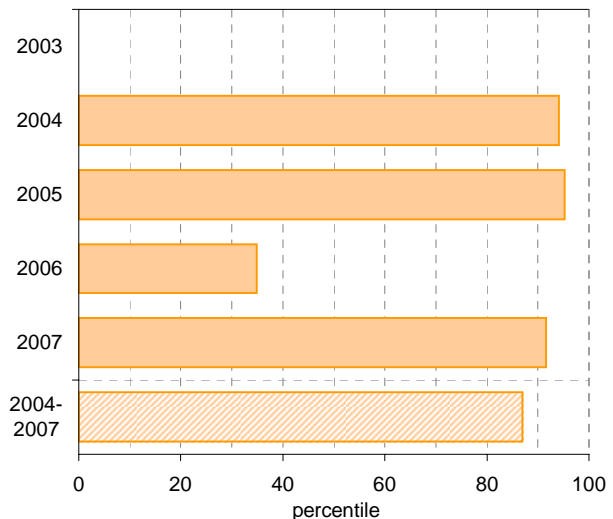
School as percentile



Completion - % satisfactory completion of VCAL credits School against State



School as percentile



■ School
 ■ State Mean
 — School Trendline*
 ■ School as percentile

Teacher Assessment of Student Progress (PSD students)

School no: 7775

School name: Donald High School

Explanation: Teachers assess their students' progress against the 8 VELs Domains / CSF KLAs using a 6-point scale (students in special schools and those who cannot be assessed against the VELs / CSF).

Source of data: Data transmitted from school to DEECD via an online web-form.

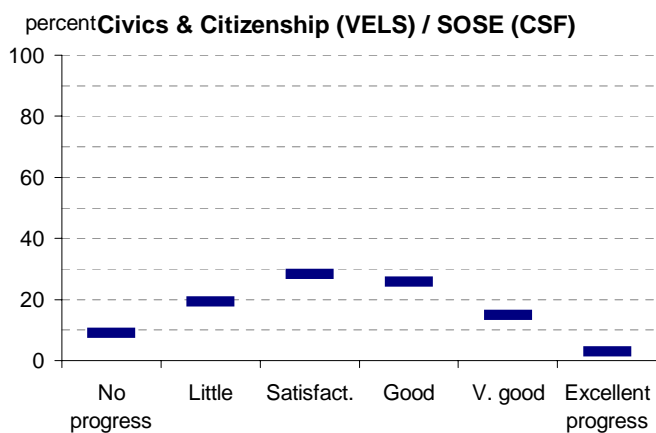
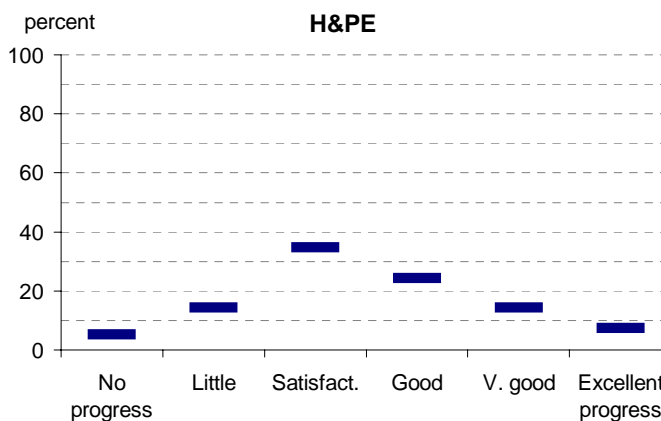
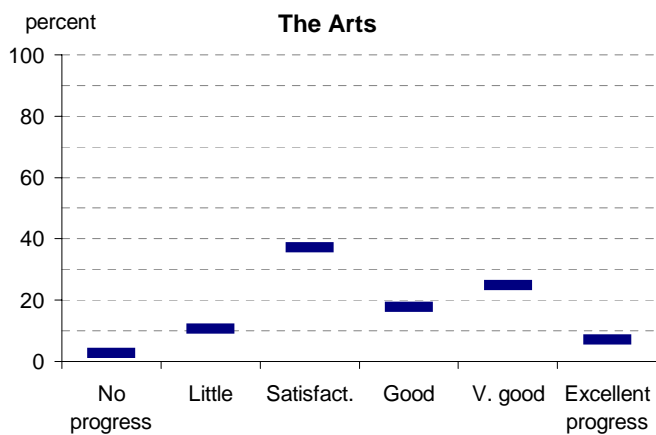
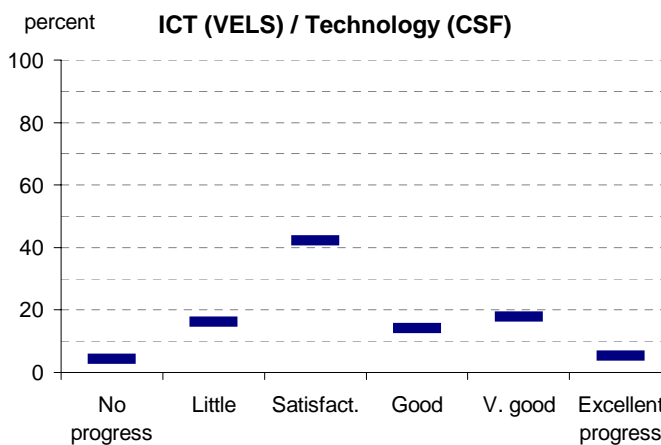
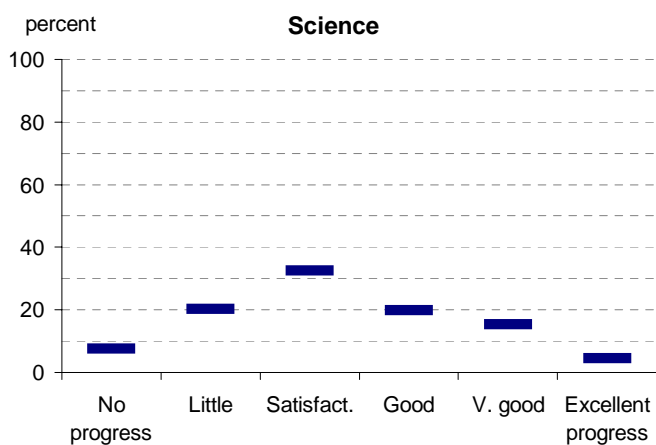
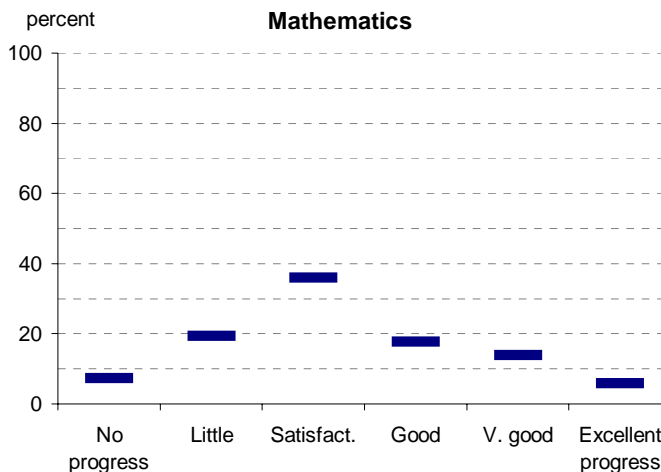
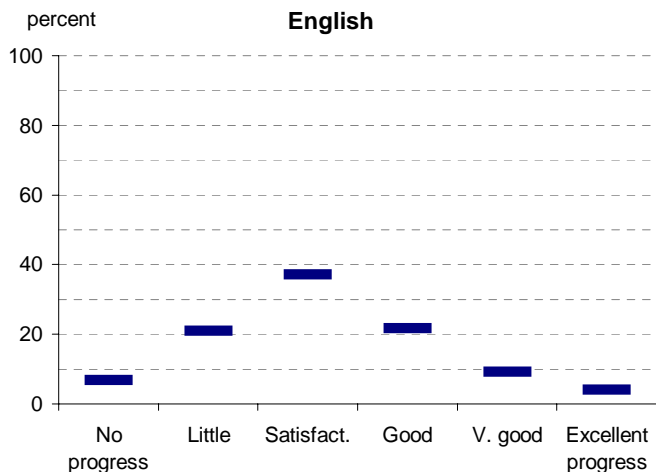
	No progress progress (%)	Little progress (%)	Satisfactory progress (%)	Good progress (%)	Very good progress (%)	Excellent progress (%)	Total students assessed ¹ (no.)
2003 (by CSF KLA)							
English							
Mathematics							
Science							
Technology							
The Arts							
H&PE							
SOSE							
2004 (by CSF KLA)							
English							
Mathematics							
Science							
Technology							
The Arts							
H&PE							
SOSE							
2005 (by CSF KLA)							
English							
Mathematics							
Science							
Technology							
The Arts							
H&PE							
SOSE							
2006 (by VELs Domain)							
English							
Mathematics							
Science							
Technology							
The Arts							
H&PE							
SOSE							
2007 (by VELs Domain)							
English							
Mathematics							
Science							
ICT							
The Arts							
H&PE							
Civics & Citizenship							
2006 Secondary state benchmarks (by VELs Domain)*							
English	7	21	37	22	9	4	
Mathematics	7	19	36	18	14	6	
Science	8	20	32	20	15	5	
Technology	4	16	42	14	18	5	
The Arts	3	11	37	18	25	7	
H&PE	5	14	35	24	14	7	
SOSE	9	19	28	26	15	3	

Notes: ¹ If schools provided percentages only, it is not possible to report the number of students assessed. In these cases, the total percentage (100) will be shown.

* 2007 benchmarks will be calculated in August, when data from all schools has been submitted.

Teacher Assessment of Student Progress (PSD students)

School no: 7775
 School name: Donald High School



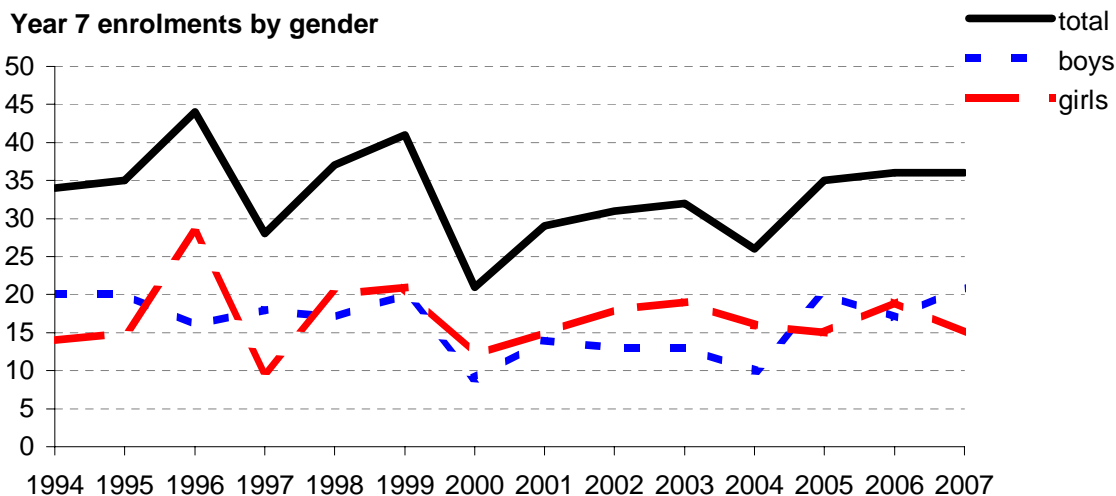
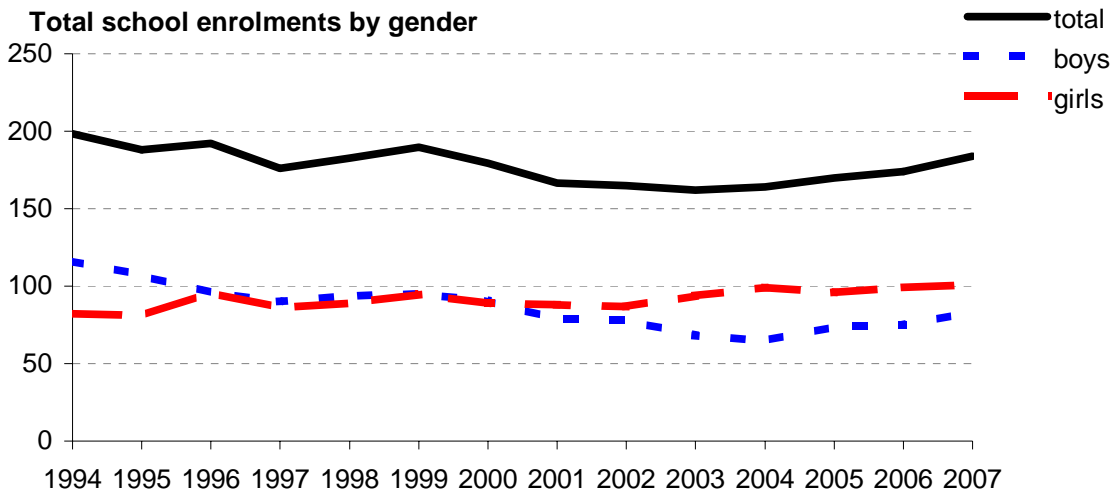
- 2003 (by CSF KLA)
- 2004 (by CSF KLA)
- 2005 (by CSF KLA)
- 2006 (by VELS Domain)
- 2007 (by VELS Domain)
- 2006 Secondary state benchmarks (by VELS Domain)*

Notes: * 2007 benchmarks will be calculated in August, when data from all schools has been submitted.

Enrolments

School no: 7775
School name: Donald High School
Explanation: Enrolments at February census.
Source of data: February census.

Year	Total school enrolment			Prep enrolment			Year 7 enrolments		
	boys	girls	total	boys	girls	total	boys	girls	total
1994	116	82	198				20	14	34
1995	107	81	188				20	15	35
1996	96	96	192				16	28	44
1997	90	86	176				18	10	28
1998	94	89	183				17	20	37
1999	95	95	190				20	21	41
2000	91	89	180				9	12	21
2001	79	88	167				14	15	29
2002	78	87	165				13	18	31
2003	68	94	162				13	19	32
2004	65	99	164				10	16	26
2005	74	96	170				20	15	35
2006	75	99	174				17	19	36
2007	83	101	184				21	15	36



Apparent Retention

Notes: * The school trendline is being trialled. It is only plotted when there is data for each calendar year.

School no: 7775

School name: Donald High School

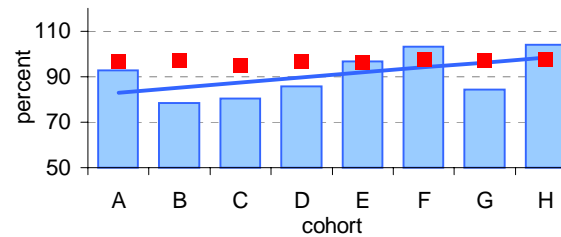
Explanation: Apparent retention rates are based on enrolments. For example, Year 7Feb-12Aug apparent retention refers to year 12 enrolment of students in full-time school education in August expressed as a percentage of year 7 enrolments in February five years earlier.

Source of data: February and August census.

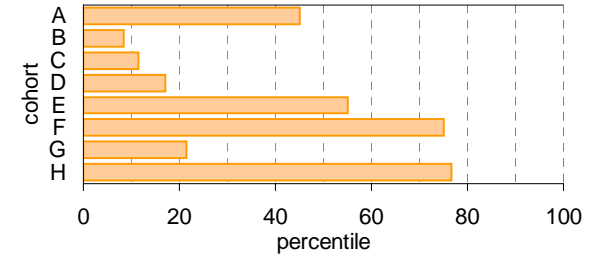
Year 7 (Feb) - 10 (Aug)

	Cohorts:	A	B	C	D	E	F	G	H
Year 7		1997	1998	1999	2000	2001	2002	2003	2004
Year 10		2000	2001	2002	2003	2004	2005	2006	2007
Year 7 (Feb)	no.	28	37	41	21	29	31	32	26
Year 10 (Aug)	no.	26	29	33	18	28	32	27	27
Year 7 (Feb) - 10 (Aug)	%	92.9	78.4	80.5	85.7	96.6	103.2	84.4	103.8
State mean	%	96.6	97.3	95.0	96.6	96.3	97.6	97.3	97.5

School against State

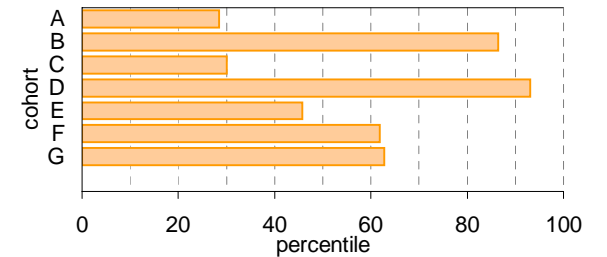
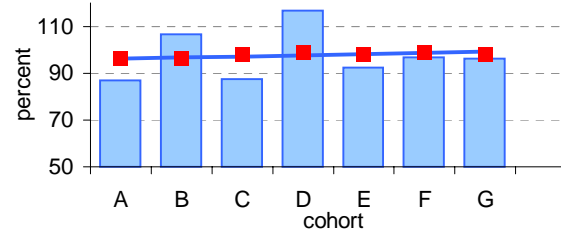


School as percentile



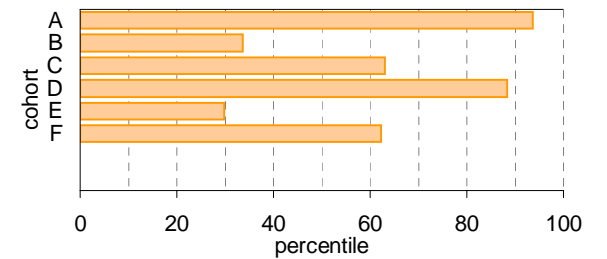
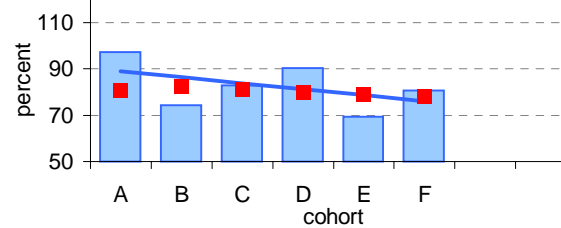
Year 10 (Aug) - 11 (Feb)

	Cohorts:	A	B	C	D	E	F	G
Year 10		2000	2001	2002	2003	2004	2005	2006
Year 11		2001	2002	2003	2004	2005	2006	2007
Year 10 (Aug)	no.	26	29	33	18	28	32	27
Year 11 (Feb)	no.	22.6	30.9	28.9	21	25.9	31	26
Year 10 (Aug) - 11 (Feb)	%	86.9	106.6	87.6	116.7	92.5	96.9	96.3
State mean	%	96.4	96.2	97.7	98.7	98.2	99.0	98.2



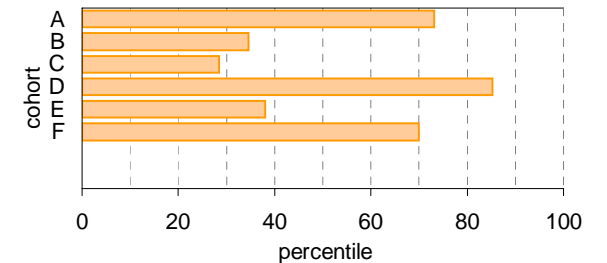
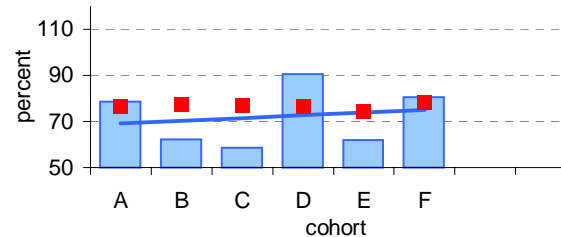
Year 11 (Feb) - 12 (Aug)

	Cohorts:	A	B	C	D	E	F
Year 11		2001	2002	2003	2004	2005	2006
Year 12		2002	2003	2004	2005	2006	2007
Year 11 (Feb)	no.	22.6	30.9	28.9	21	25.9	31
Year 12 (Aug)	no.	22	23	24	19	18	25
Year 11 (Feb) - 12 (Aug)	%	97.3	74.4	83.0	90.5	69.5	80.6
State mean	%	80.7	82.5	81.0	79.9	78.8	78.1



Year 7 (Feb) - 12 (Aug)

	Cohorts:	A	B	C	D	E	F
Year 7		1997	1998	1999	2000	2001	2002
Year 12		2002	2003	2004	2005	2006	2007
Year 7 (Feb)	no.	28	37	41	21	29	31
Year 12 (Aug)	no.	22	23	24	19	18	25
Year 7 (Feb) - 12 (Aug)	%	78.6	62.2	58.5	90.5	62.1	80.6
State mean	%	76.7	77.2	76.9	76.8	74.6	78.2



Legend: School (blue bar), State Mean (red square), School Trendline* (blue line)

Legend: School as percentile (orange bar)

Real Retention

Notes: * The school trendline is being trialled. It is only plotted when there is data for each calendar year.
 ^ 2007 benchmarks will be calculated in August, when data from all schools has been submitted.

School no: 7775

School name: Donald High School

Explanation: Real retention rates show the percentage of students who have been enrolled at the same school over a period of time.

For example, the formula for the real retention rate for Year 7Feb to 10Aug for school X in 2007 is as follows:

$$\frac{\text{(no. of students enrolled in Yr10 in school X as at August 2007 census and who enrolled prior to 1/3/2004, ie, enrolled in school X at beginning of Yr7)}}{\text{(enrolments in Yr7 Feb in 2004 according to census)}}$$

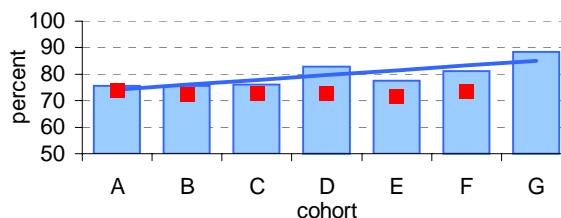
By definition, real school retention will be less than or equal to 100% (assuming there are no students repeating the year, or accelerating through years). Generally, real school retention rates are affected by students transferring to another school & students exiting the school system. They are a measure of the 'holding power' of the school.

Source of data: Data retrieved electronically from CASES21 at time of rollover.

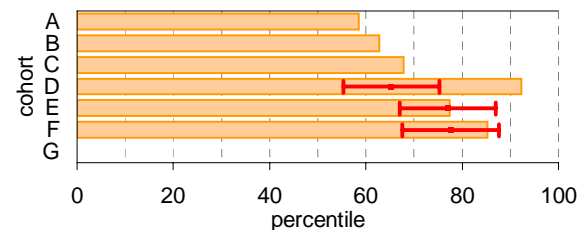
Year 7 (Feb) - 10 (Aug)

	Cohorts:	A	B	C	D	E	F	G
Year 7		1998	1999	2000	2001	2002	2003	2004
Year 10		2001	2002	2003	2004	2005	2006	2007
Year 7 (Feb)	no.	37	41	21	29	31	32	26
Year 10 (Aug)	no.	28	31	16	24	24	26	23
Year 7 (Feb) - 10 (Aug)	%	75.7	75.6	76.2	82.8	77.4	81.3	88.5
State mean^	%	73.8	72.5	72.7	72.8	71.7	73.5	

School against State^

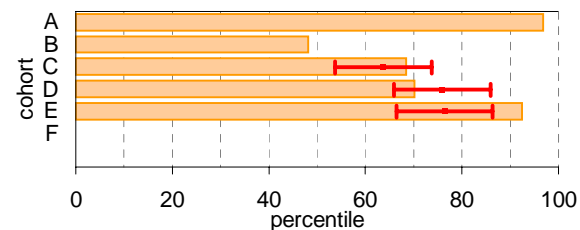
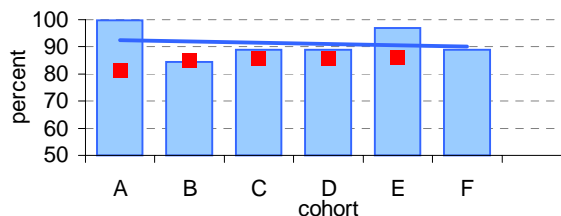


School as percentile against SFO percentile range^



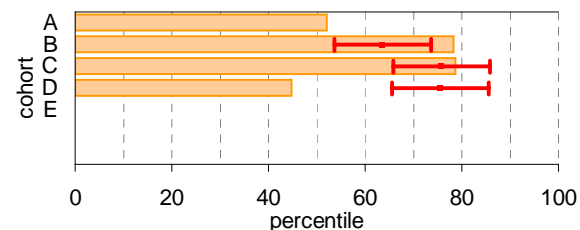
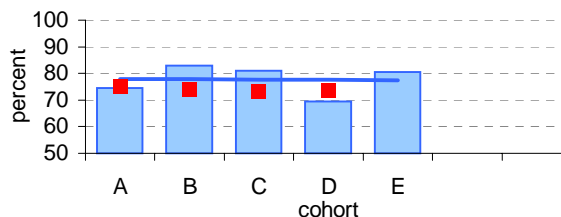
Year 10 (Aug) - 11 (Feb)

	Cohorts:	A	B	C	D	E	F
Year 10		2001	2002	2003	2004	2005	2006
Year 11		2002	2003	2004	2005	2006	2007
Year 10 (Aug)	no.	29	33	18	28	32	27
Year 11 (Feb)	no.	28.9	27.9	16	24.9	31	24
Year 10 (Aug) - 11 (Feb)	%	99.7	84.5	88.9	88.9	96.9	88.9
State mean^	%	81.3	84.9	85.9	85.9	86.1	



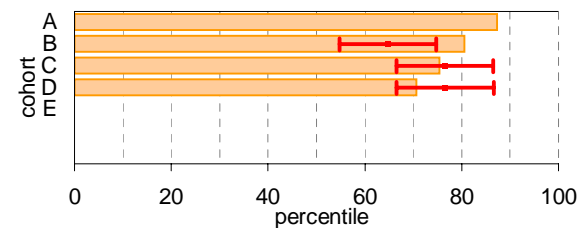
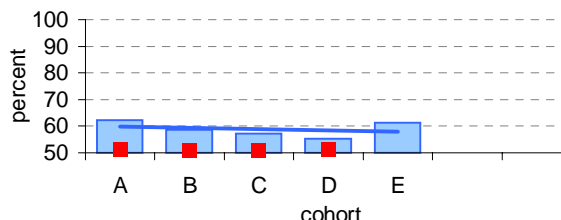
Year 11 (Feb) - 12 (Aug)

	Cohorts:	A	B	C	D	E
Year 11		2002	2003	2004	2005	2006
Year 12		2003	2004	2005	2006	2007
Year 11 (Feb)	no.	30.9	28.9	21	25.9	31
Year 12 (Aug)	no.	23	24	17	18	25
Year 11 (Feb) - 12 (Aug)	%	74.4	83.0	81.0	69.5	80.6
State mean^	%	75.0	73.9	73.0	73.5	



Year 7 (Feb) - 12 (Aug)

	Cohorts:	A	B	C	D	E
Year 7		1998	1999	2000	2001	2002
Year 12		2003	2004	2005	2006	2007
Year 7 (Feb)	no.	37	41	21	29	31
Year 12 (Aug)	no.	23	24	12	16	19
Year 7 (Feb) - 12 (Aug)	%	62.2	58.5	57.1	55.2	61.3
State mean^	%	51.3	50.6	51.0	51.1	



Legend: School (blue bar), State Mean (red square), School Trendline* (blue line)

Legend: School as percentile (orange bar), SFO Percentile range (red arrow)

Exit Destination: Year 10

School no: 7775

School name: Donald High School

Explanation: The destination of students who left during or at the end of Year 10.

Source of data: Data retrieved electronically from CASES21 following February census.

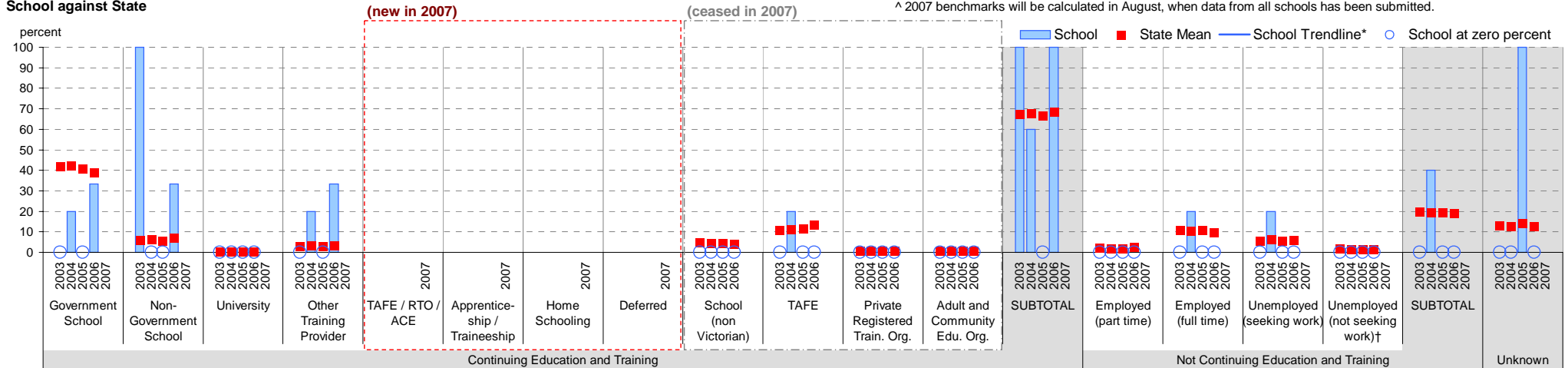
Exit Destination	2003		2004		2005		2006		2007		2007 state^
	n	%	n	%	n	%	n	%	n	%	%
Continuing education and training											
Government School			1	20.0			1	33.3			
Non-Government School	1	100.0					1	33.3			
University											
Other Training Provider			1	20.0			1	33.3			
(new in 2007)											
TAFE / RTO / ACE											
Apprenticeship / Traineeship											
Home Schooling											
Deferred											
(ceased in 2007)											
School (non Victorian)											
TAFE			1	20.0							
Private Registered Training Organisation											
Adult and Community Education Organisation											
SUBTOTAL	1	100.0	3	60.0			3	100.0			
Not continuing education and training											
Employed (part time)											
Employed (full time)			1	20.0							
Unemployed (seeking work)			1	20.0							
Unemployed (not seeking work)†											
SUBTOTAL			2	40.0							
Unknown					1	100.0					
TOTAL	1	100.0	5	100.0	1	100.0	3	100.0			
Total Yr 10 February enrolment	17		27		31		27				

Notes: * The school trendline is being trialled. It is only plotted when there is data for each calendar year.

† Includes deceased students.

^ 2007 benchmarks will be calculated in August, when data from all schools has been submitted.

School against State



Exit Destination: Year 11

School no: 7775

School name: Donald High School

Explanation: The destination of students who left during or at the end of Year 11.

Source of data: Data retrieved electronically from CASES21 following February census.

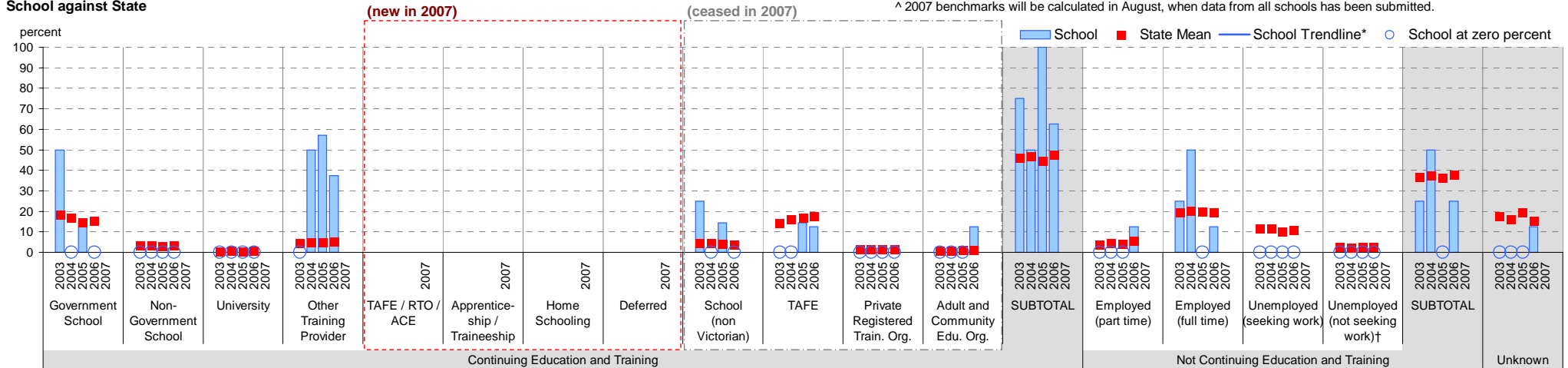
Exit Destination	2003		2004		2005		2006		2007		2007 state [^]
	n	%	n	%	n	%	n	%	n	%	%
Continuing education and training											
Government School	2	50.0			1	14.3					
Non-Government School											
University			1	50.0	4	57.1	3	37.5			
Other Training Provider											
TAFE / RTO / ACE											
Apprenticeship / Traineeship											
Home Schooling											
Deferred											
(ceased in 2007)											
School (non Victorian)	1	25.0			1	14.3					
TAFE					1	14.3	1	12.5			
Private Registered Training Organisation							1	12.5			
Adult and Community Education Organisation											
SUBTOTAL	3	75.0	1	50.0	7	100.0	5	62.5			
Not continuing education and training											
Employed (part time)							1	12.5			
Employed (full time)	1	25.0	1	50.0			1	12.5			
Unemployed (seeking work)											
Unemployed (not seeking work)†											
SUBTOTAL	1	25.0	1	50.0			2	25.0			
Unknown											
TOTAL	4	100.0	2	100.0	7	100.0	8	100.0			
Total Yr 11 February enrolment	29		21		26		31				

Notes: * The school trendline is being trialled. It is only plotted when there is data for each calendar year.

† Includes deceased students.

^ 2007 benchmarks will be calculated in August, when data from all schools has been submitted.

School against State



Exit Destination: Students who left Year 12 before completing the year

School no: 7775

School name: Donald High School

Explanation: The destination of students who left prior to completing Year 12.

Source of data: Data retrieved electronically from CASES21 following February census.

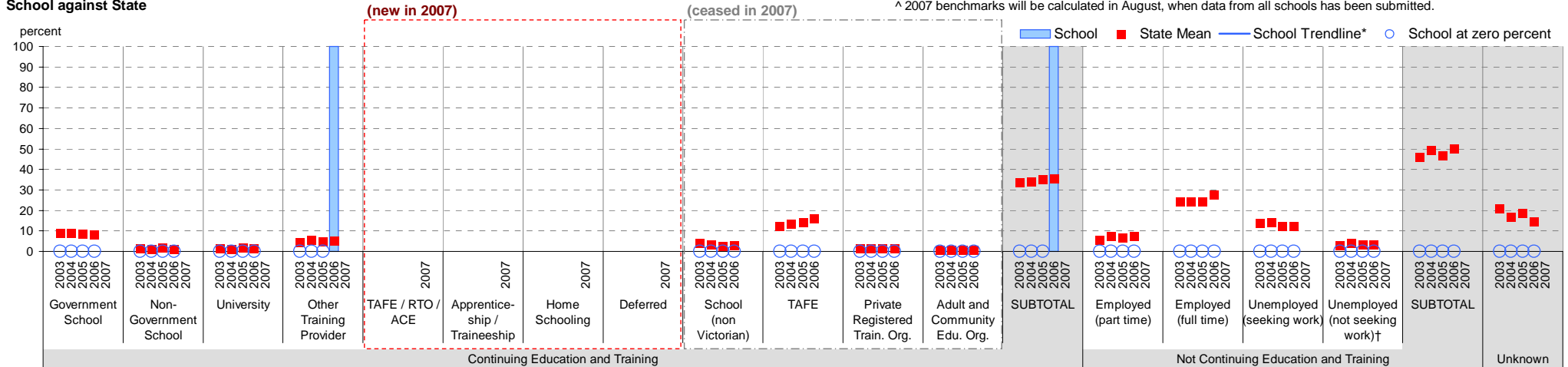
Exit Destination	2003		2004		2005		2006		2007		2007 state^
	n	%	n	%	n	%	n	%	n	%	%
Continuing education and training											
Government School											
Non-Government School											
University											
Other Training Provider							1	100.0			
(new in 2007)											
TAFE / RTO / ACE											
Apprenticeship / Traineeship											
Home Schooling											
Deferred											
(ceased in 2007)											
School (non Victorian)											
TAFE											
Private Registered Training Organisation											
Adult and Community Education Organisation											
SUBTOTAL							1	100.0			
Not continuing education and training											
Employed (part time)											
Employed (full time)											
Unemployed (seeking work)											
Unemployed (not seeking work)†											
SUBTOTAL											
Unknown											
TOTAL							1	100.0			
Total Yr 12 February enrolment	23		24		19		18				

Notes: * The school trendline is being trialled. It is only plotted when there is data for each calendar year.

† Includes deceased students.

^ 2007 benchmarks will be calculated in August, when data from all schools has been submitted.

School against State



Exit Destination: Students who left at the end of Year 12

School no: 7775

School name: Donald High School

Explanation: The destination of students who left at the end of Year 12.

Source of data: Data retrieved electronically from CASES21 following February census.

Exit Destination	2003		2004		2005		2006		2007		2007 state^
	n	%	n	%	n	%	n	%	n	%	
Continuing education and training											
Government School											
Non-Government School											
University	10	38.5	14	51.9	12	63.2	11	61.1			
Other Training Provider	1	3.8	3	11.1	1	5.3	1	5.6			
(new in 2007)											
TAFE / RTO / ACE											
Apprenticeship / Traineeship											
Home Schooling											
Deferred											
(ceased in 2007)											
School (non Victorian)											
TAFE	1	3.8	3	11.1	4	21.1	2	11.1			
Private Registered Training Organisation	1	3.8					1	5.6			
Adult and Community Education Organisation											
SUBTOTAL	13	50.0	20	74.1	17	89.5	15	83.3			
Not continuing education and training											
Employed (part time)	1	3.8	3	11.1	2	10.5					
Employed (full time)	11	42.3	4	14.8			3	16.7			
Unemployed (seeking work)	1	3.8									
Unemployed (not seeking work)†											
SUBTOTAL	13	50.0	7	25.9	2	10.5	3	16.7			
Unknown											
TOTAL	26	100.0	27	100.0	19	100.0	18	100.0			
Total Yr 12 February enrolment	23		24		19		18				

Notes: * The school trendline is being trialled. It is only plotted when there is data for each calendar year.

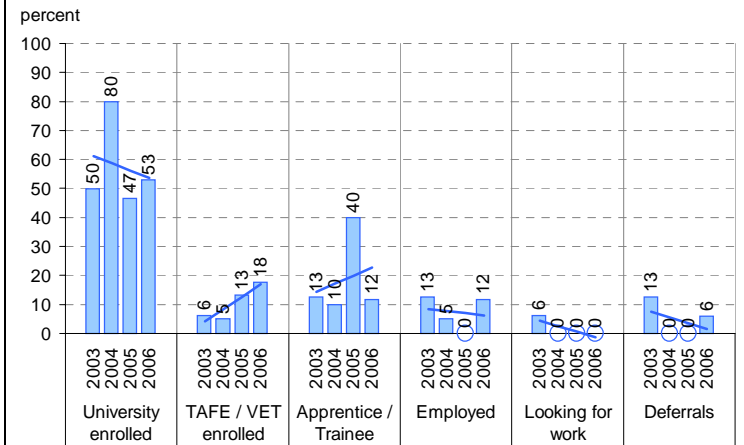
† Includes deceased students.

^ 2007 benchmarks will be calculated in August, when data from all schools has been submitted.

On Track

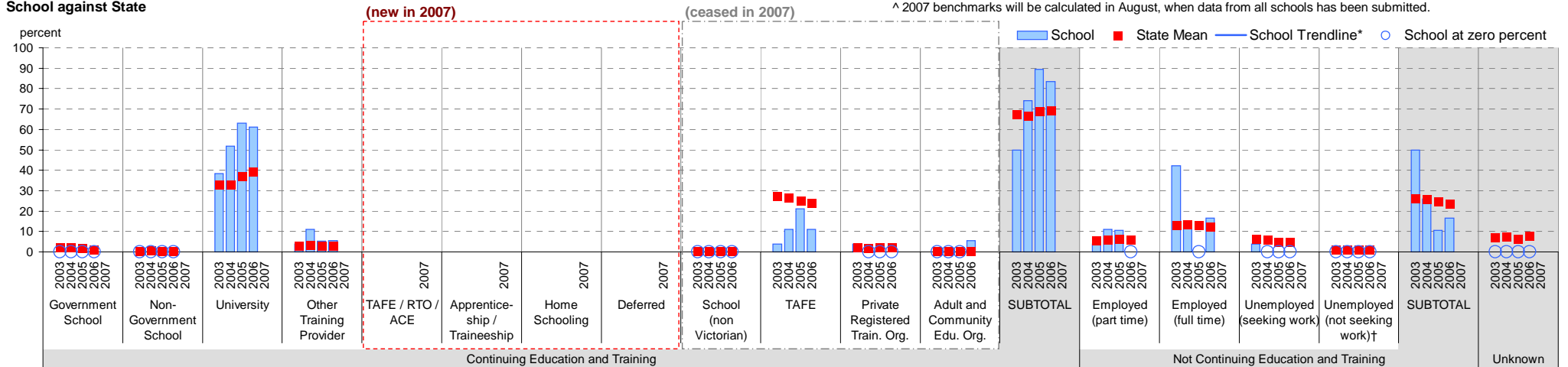
Source of data: Data received from a telephone survey of Year 12 completers, conducted in April / May of the subsequent year.

School only



Note: The exit destination data from On Track and CASES21 is not directly comparable for several reasons, one of which is the different bases. CASES21 data is based on all Year 12 completers, whereas On Track is based on Year 12 completers who responded to the survey. Hence the CASES21 data has an "unknown" category and the On Track data does not. Another reason is the slightly different categories for example, CASES21 includes a "home schooling" category.

School against State



Student Absence

School no: 7775

School name: Donald High School

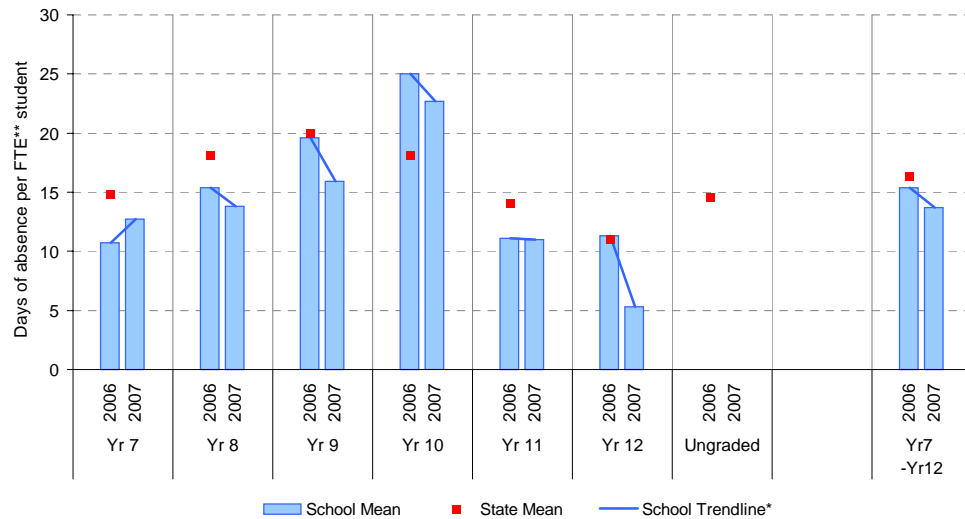
Source of data: Data retrieved electronically from CASES21.

Explanation: The average (mean) number of absent days† per student. Up to 2006, the formula used to calculate the average number of absent days per student was based on student headcount. From 2006, the formula was based on FTE** students. The new formula provides a more accurate summary of student absence. For 2006, student absence is provided for both student headcount and FTE student. Note that 20 absent days equates to 1 absent day per fortnight, and 10 absent days to 1 absent day per month.

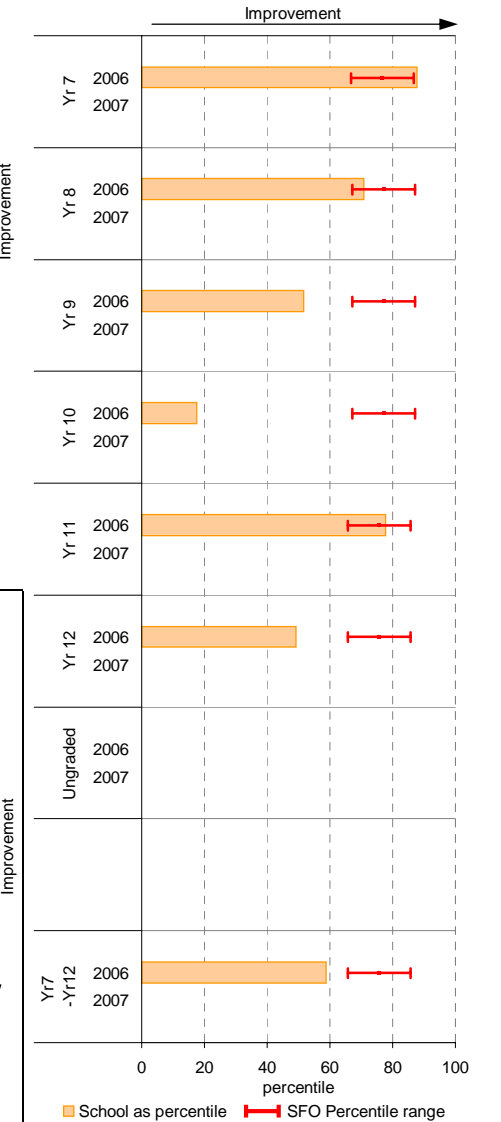
Student Absence (by FTE** student, 2006 and onward)

	School		2006 state benchmark^	
	2006	2007	25th ptile	75th ptile
Yr 7	37.0	10.7	12.8	14.8
Yr 8	33.4	15.4	14.7	18.1
Yr 9	27.4	19.6	16.0	19.9
Yr 10	27.3	25	15.2	18.2
Yr 11	31.3	11.1	11.4	14.1
Yr 12	17.8	11.3	8.1	11.0
Ungraded				14.5
7-12 mean	15.4	13.7	16.3	

School Mean against State Mean^



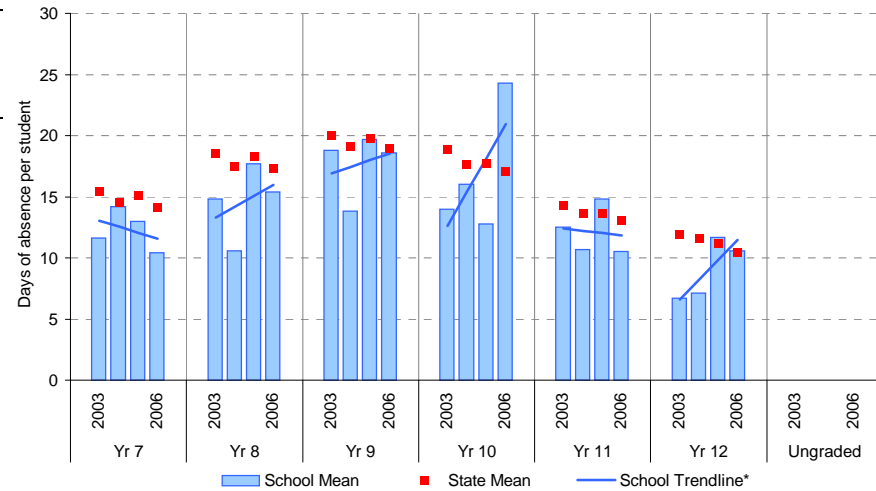
School Mean as percentile against SFO percentile range^



Student Absence (by student headcount, 2003-2006)

	School			
	2003	2004	2005	2006
Yr 7	32	11.6	26	14.2
Yr 8	34	14.8	34	10.6
Yr 9	27	18.8	34	13.8
Yr 10	17	14	30	16
Yr 11	28.9	12.5	21	10.7
Yr 12	23	6.7	27	7.1
Ungraded				
7-12 mean	13.2	12.2	15.1	14.9

School Mean against State Mean



Improvement

Notes: † Includes non-curriculum absences only (absence codes 200, 201, 202, 203, 205, 206, 207, 208, 209, 210, 211, 300, 401, 500, 700, 800, 804, 805, 900).

* The school trendline is being trialled. It is only plotted when there is data for each calendar year.
 ** FTE = Full Time Equivalent (including part-time and part-year fractions).

^ 2007 benchmarks will be calculated in August, when data from all schools has been submitted.

Parent Opinion

School no: 7775

School name: Donald High School

Explanation: A self-completion questionnaire to obtain parents' opinions of the school. Parents rated a number of statements using a scale where 1=strongly disagree & 7=strongly agree. The statements were grouped into the following categories.

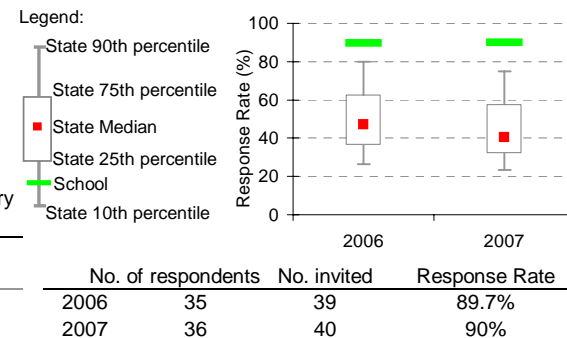
Source of data: Data scanned from questionnaires completed by parents.

Variable No.	Name	Year	School mean	State Secondary median
1	School Improvement	2006	5.78	5.13
		2007	5.17	5.11
2	Approachability	2006	5.50	5.11
		2007	4.80	5.10
3	Teacher Morale	2006	5.68	4.92
		2007	4.89	4.88
4	Parent Input	2006	5.35	4.89
		2007	4.97	4.83
5	Stimulating Learning	2006	5.51	4.81
		2007	4.63	4.79
6	Behaviour Management	2006	5.49	4.76
		2007	4.56	4.76
7	Reporting	2006	5.87	5.28
		2007	5.41	5.11

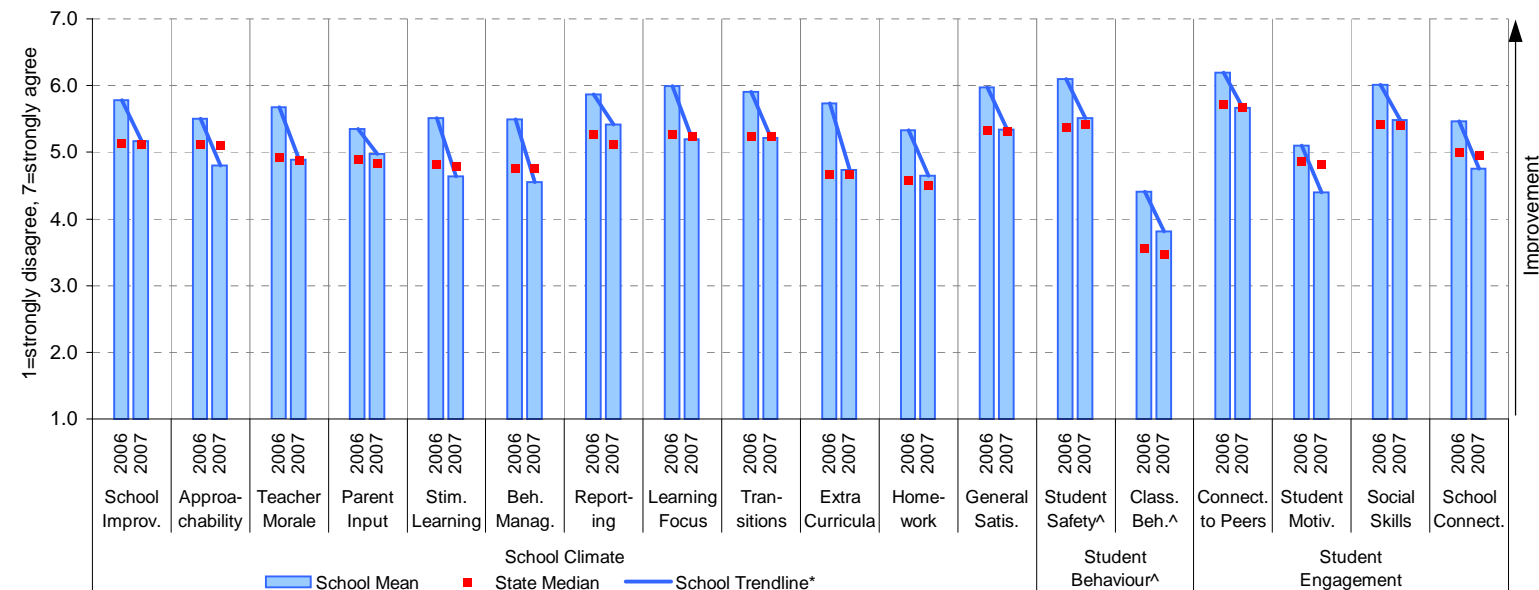
Variable No.	Name	Year	School mean	State Secondary median
8	Learning Focus	2006	5.99	5.27
		2007	5.20	5.24
9	Transitions	2006	5.91	5.24
		2007	5.21	5.23
10	Extra Curricula	2006	5.73	4.67
		2007	4.73	4.67
11	Homework	2006	5.33	4.57
		2007	4.65	4.51
12	General Satisfaction	2006	5.97	5.33
		2007	5.34	5.31
13	Student Safety^	2006	6.10	5.37
		2007	5.51	5.42
14	Classroom Behaviour^	2006	4.41	3.56
		2007	3.81	3.47

Variable No.	Name	Year	School mean	State Secondary median
15	Connectedness to Peers	2006	6.19	5.71
		2007	5.67	5.68
16	Student Motivation	2006	5.10	4.87
		2007	4.40	4.81
17	Social Skills	2006	6.01	5.42
		2007	5.48	5.41
18	School Connectedness	2006	5.46	4.99
		2007	4.75	4.95

School response rate** against Secondary school distribution



School Mean against Secondary State Mean



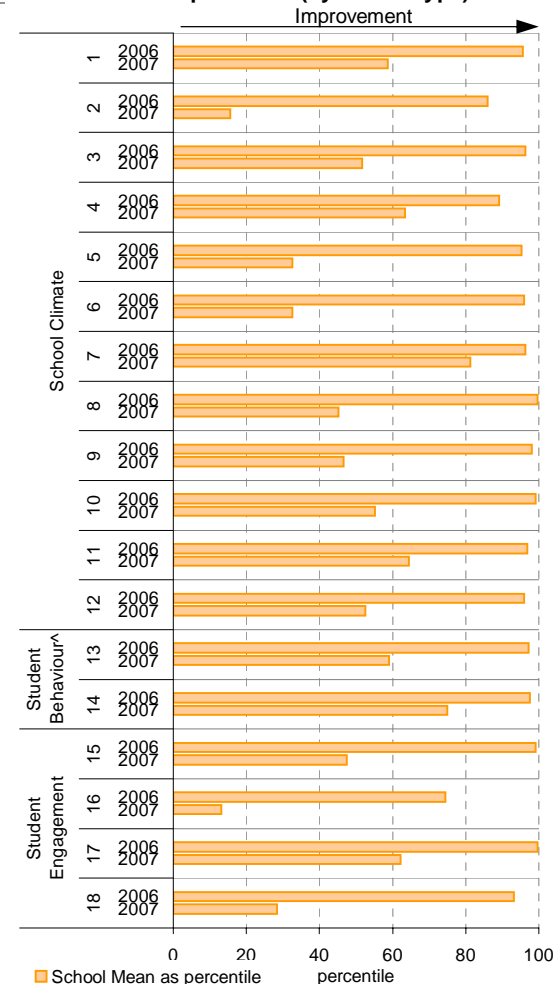
Notes: * The school trendline is being trialled. It is only plotted when there is data for each calendar year.

** If there were 6 or less respondents, table data is not shown for confidentiality reasons. If there were 3 or less respondents, graph data is not shown for confidentiality reasons.

^ Parents' responses to all negatively phrased questions have been reversed for reporting purposes. Across all variables, the higher the score or percentile rank, the more positive parents' perceptions.

^^ Benchmarks available for Primary, Secondary, Pri/Sec, Special and SDS schools.

School Mean as percentile (by school type)



Parent Opinion (pre-2006)

School no: 7775

School name: Donald High School

Explanation: A self-completion questionnaire to obtain parents' opinions of the school. Parents rated a number of statements using a scale where 1=strongly disagree & 6=strongly agree. The statements were grouped into the following categories.

Source of data: From 2004, data scanned from questionnaires completed by parents.

Year	Number of respondents
2004	96
2005	38

Variable	Year	School Mean	Secondary State Mean
Quality of Teaching	2001	5.24	4.46
	2002	5.00	4.53
	2003	5.20	4.54
	2004	5.32	4.71
	2005	5.19	4.70

Variable	Year	School Mean	Secondary State Mean
Reporting and Feedback	2004	5.42	5.00
	2005	5.26	4.96
Student Behaviour	2004	5.45	5.07
	2005	5.47	5.07

Variable	Year	School Mean	Secondary State Mean
School / Parent Relations	2004	5.47	5.00
	2005	5.09	4.95
Extra-Curricular	2004	5.72	5.11
	2005	5.42	5.09

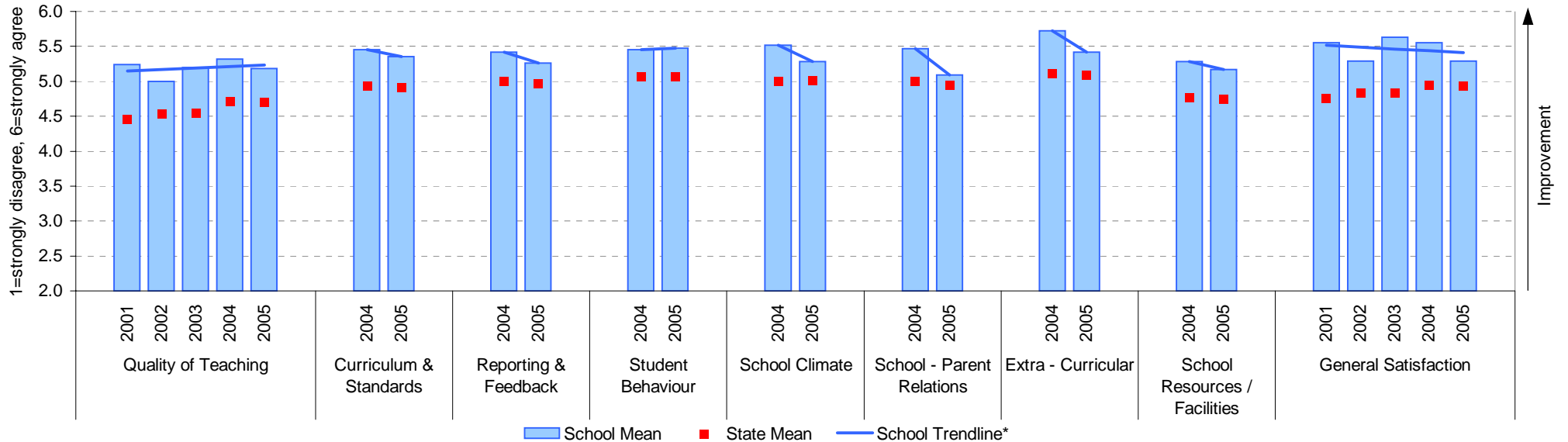
Variable	Year	School Mean	Secondary State Mean
General Satisfaction	2001	5.55	4.76
	2002	5.29	4.83
	2003	5.63	4.83
	2004	5.55	4.94
	2005	5.29	4.93

Variable	Year	School Mean	Secondary State Mean
Curriculum and Standards	2004	5.45	4.93
	2005	5.35	4.91

Variable	Year	School Mean	Secondary State Mean
School Climate	2004	5.52	5.00
	2005	5.28	5.01

Variable	Year	School Mean	Secondary State Mean
School Resources / Facilities	2004	5.28	4.77
	2005	5.17	4.74

School Mean against Secondary State Mean



Notes: * The school trendline is being trialled. It is only plotted when there is data for each calendar year.

^^ State Means available for Primary, Secondary, Pri/Sec, Special and SDS schools.

Staff Opinion

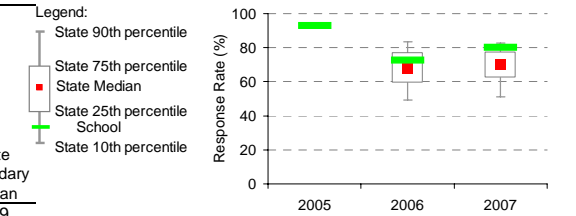
School no: 7775

School name: Donald High School

Explanation: A self-completion questionnaire to obtain the staff's opinions of the school. The survey was administered online using the School Organisational Health Questionnaire.

Source of data: Data transmitted from school staff to DEECD via an online survey application.

School response rate** against Secondary school distribution



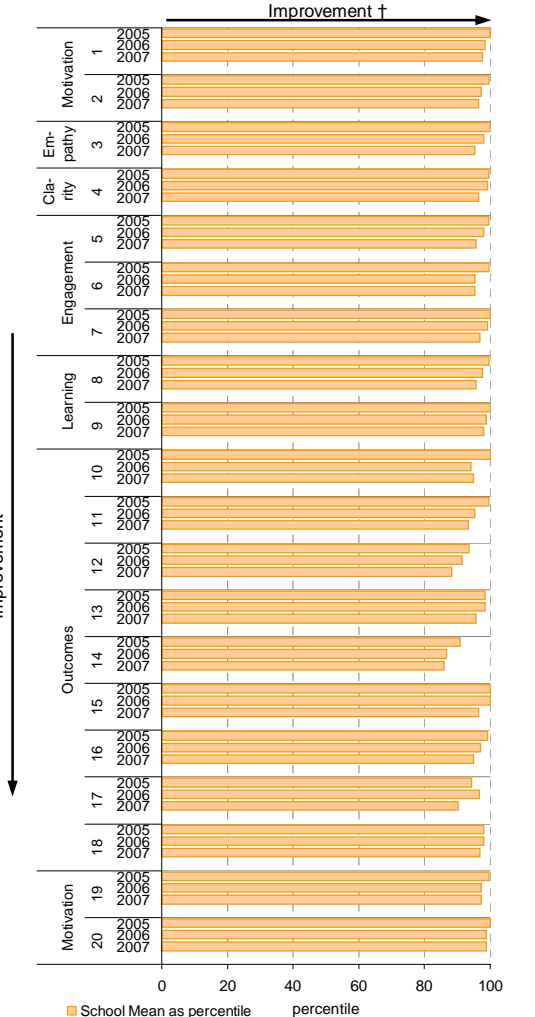
	No. of respondents	No. invited	Response Rate
2005	26	28	93%
2006	24	33	73%
2007	28	35	80%

Variable No.	Name	Year	School mean	State Secondary median
1	Individual Morale	2005	82.9	63.3
		2006	78.5	64.2
		2007	79.4	63.5
2	School Morale	2005	91.3	60.7
		2006	82.7	60.8
		2007	81.6	60.2
3	Supportive Leadership	2005	93.7	64.3
		2006	87.7	65.0
		2007	85.4	63.8
4	Role Clarity	2005	85.3	68.5
		2006	83.1	68.0
		2007	80.8	67.8
5	Professional Interaction	2005	89.8	68.2
		2006	84.4	68.1
		2007	83.9	68.3
6	Participative Decision-Making	2005	87.0	58.7
		2006	76.6	59.0
		2007	76.6	58.7
7	Goal Congruence	2005	91.0	65.0
		2006	85.4	64.7
		2007	82.5	65.3

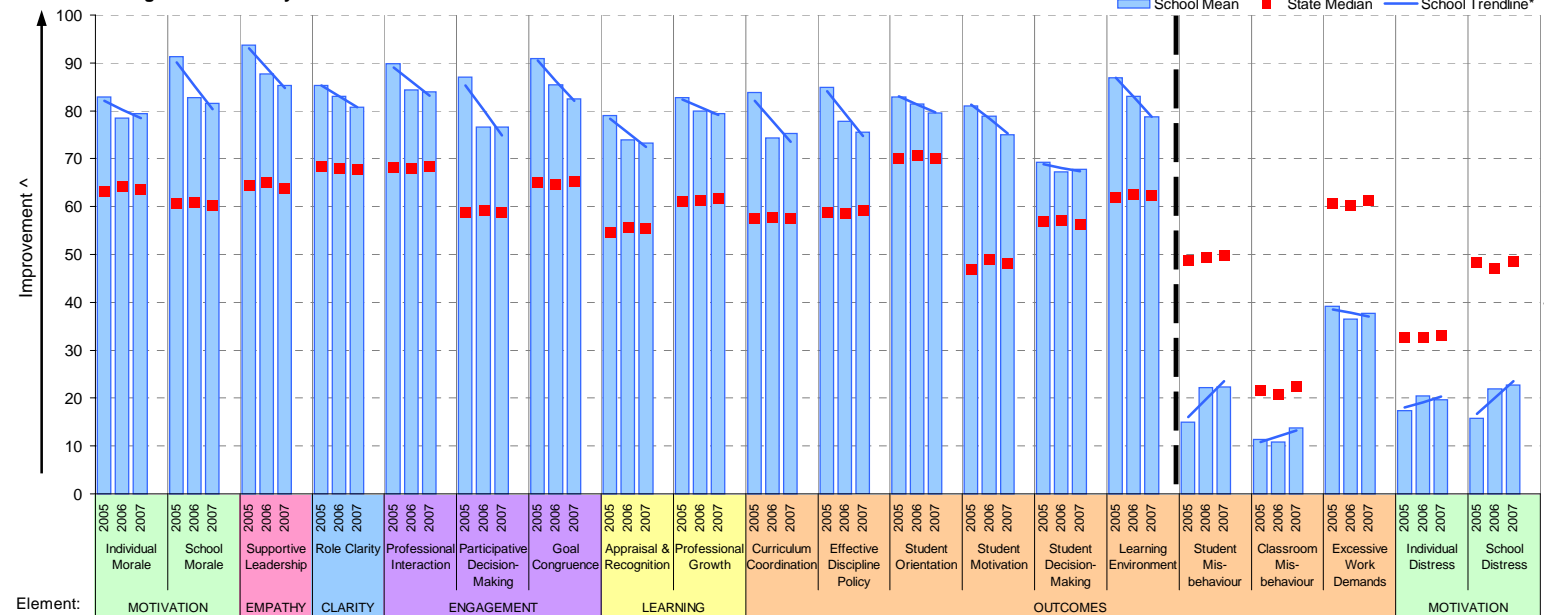
Variable No.	Name	Year	School mean	State Secondary median
8	Appraisal & Recognition	2005	79.0	54.7
		2006	74.0	55.6
		2007	73.2	55.4
9	Professional Growth	2005	82.7	61.0
		2006	80.0	61.2
		2007	79.5	61.6
10	Curriculum Coordination	2005	83.9	57.5
		2006	74.3	57.8
		2007	75.3	57.5
11	Effective Discipline Policy	2005	84.9	58.7
		2006	77.8	58.5
		2007	75.6	59.2
12	Student Orientation	2005	82.9	70.0
		2006	81.5	70.5
		2007	79.6	70.0
13	Student Motivation	2005	81.1	46.9
		2006	78.9	48.9
		2007	75.0	48.1
14	Student Decision-Making	2005	69.2	56.8
		2006	67.2	57.2
		2007	67.7	56.2

Variable No.	Name	Year	School mean	State Secondary median
15	Learning Environment	2005	86.8	61.9
		2006	83.0	62.6
		2007	78.7	62.3
16	Student Misbehaviour	2005	14.9	48.7
		2006	22.2	49.3
		2007	22.4	49.9
17	Classroom Misbehaviour	2005	11.4	21.6
		2006	10.9	20.9
		2007	13.8	22.4
18	Excessive Work Demands	2005	39.2	60.7
		2006	36.5	60.4
		2007	37.7	61.4
19	Individual Distress	2005	17.4	32.8
		2006	20.4	32.6
		2007	19.6	33.2
20	School Distress	2005	15.8	48.3
		2006	21.9	47.1
		2007	22.7	48.6

School Mean as percentile (by school type)



School Mean against Secondary State Mean



Notes: * The school trendline is being trialled. It is only plotted when there is data for each calendar year.

** If there were 6 or less respondents, table data is not shown for confidentiality reasons. If there were 3 or less respondents, graph data is not shown for confidentiality reasons.

^ The higher the school mean, the more positive the outcome for variables 1 to 15. The lower the school mean, the more positive the outcome for variables 16 to 20.

† The higher the school percentile, the more positive the outcome for all variables.

^^ Benchmarks are available for Primary, Secondary, Pri/Sec, Special & SDS schools.

Staff Sick Leave

School no: 7775

School name: Donald High School

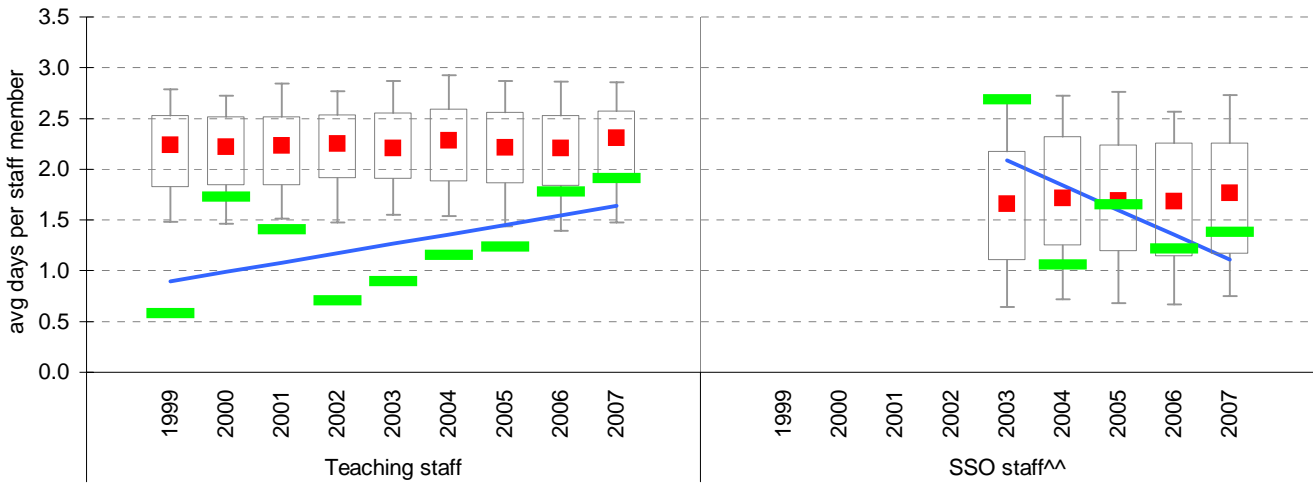
Explanation: The number of non-certificated and total sick leave days taken per staff member. A detailed explanation on how staff sick leave is calculated is provided in the Annual Reports Frequently Asked Questions page of the Standards website (<http://www.sofweb.vic.edu.au/standards/account/arepq.htm>).

Source of data: Human Resources Management System (HRMS)^.

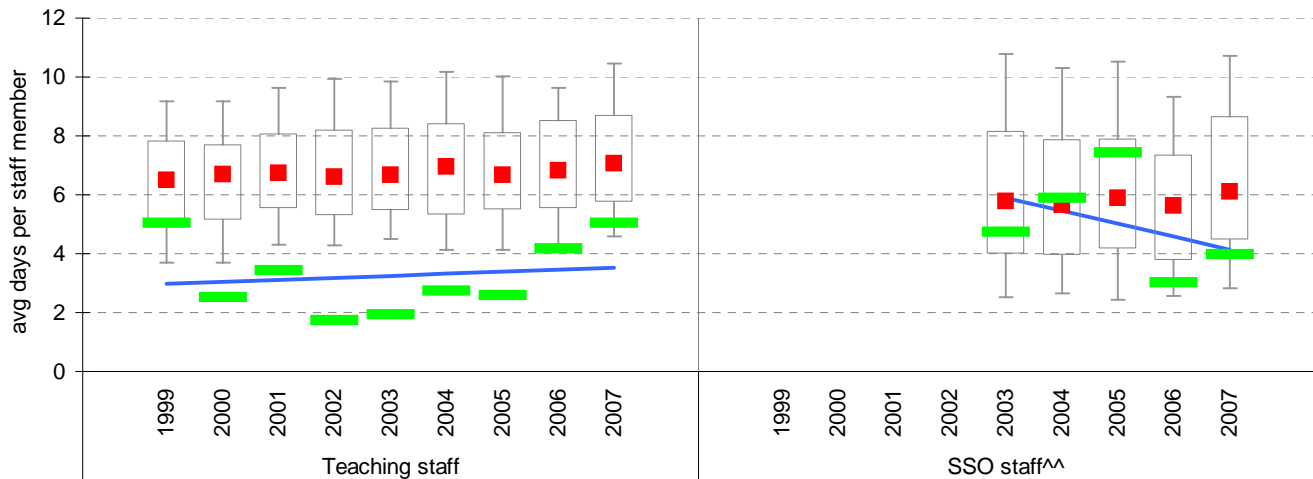
Staff Type	Non-Certificated sick leave days per staff member^									2007 State Median
	1999	2000	2001	2002	2003	2004	2005	2006	2007	
Teacher	0.58	1.73	1.41	0.71	0.90	1.15	1.24	1.78	1.91	2.31
SSO^^					2.69	1.06	1.65	1.22	1.38	1.77

Staff Type	Total sick leave days per staff member^									2007 State Median
	1999	2000	2001	2002	2003	2004	2005	2006	2007	
Teacher	5.05	2.53	3.44	1.75	1.94	2.74	2.58	4.17	5.04	7.06
SSO^^					4.74	5.90	7.43	3.02	3.99	6.10

NON-CERTIFICATED sick leave



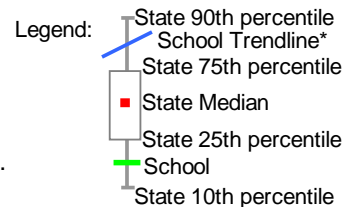
TOTAL sick leave



Note: * The school trendline is being trialled. It is only plotted when there is data for each calendar year.

^ There may be some discrepancy between the results from CASES & those from HRMS. The latter are considered to be more accurate.

^^ Data for SSO (School Services Officer) staff is only available from 2003.



Teaching Staff Retention

School no: 7775

School name: Donald High School

Explanation: The retention rate of teaching staff is determined by matching staff payroll records for the last pay in June of one year (Year A), to the last pay in June of the following year (Year B).

Source of data: Human Resources Management System (HRMS).

Teaching Staff*

Year A	Year B	Number of Teaching Staff in Year A	Number of Teaching Staff retained in Year B	Teaching Staff Retention Rate	Statewide Average
2005	2006	24	22	92%	87%
2006	2007	24	20	83%	86%

Of the 24 teaching service staff at June 2005 (including those on leave without pay), 22 or 92% were still at the school at June 2006. This figure across all Government schools was 87%.

Of the 24 teaching service staff at June 2006 (including those on leave without pay), 20 or 83% were still at the school at June 2007. This figure across all Government schools was 86%.

Ongoing Teaching Staff*^

Year A	Year B	Number of Ongoing Teaching Staff in Year A	Number of Ongoing Teaching Staff retained in Year B	Ongoing Teaching Staff Retention Rate	Statewide Average
2005	2006	22	20	91%	91%
2006	2007	20	17	85%	90%

Of the 22 ongoing teaching service staff at June 2005 (including those on leave without pay), 20 or 91% were still at the school at June 2006. This figure across all Government schools was 91%.

Of the 20 ongoing teaching service staff at June 2006 (including those on leave without pay), 17 or 85% were still at the school at June 2007. This figure across all Government schools was 90%.

Notes: * Teaching staff includes Principal class, Teacher class and Instructor class. Teaching staff employed as visiting teachers, guidance officers, curriculum consultants, etc. are excluded as they are not charged to a particular school.

^ Not including fixed term staff, except for where staff had changed from ongoing in Year A to fixed term in Year B.

Bank Balances

School no: 7775

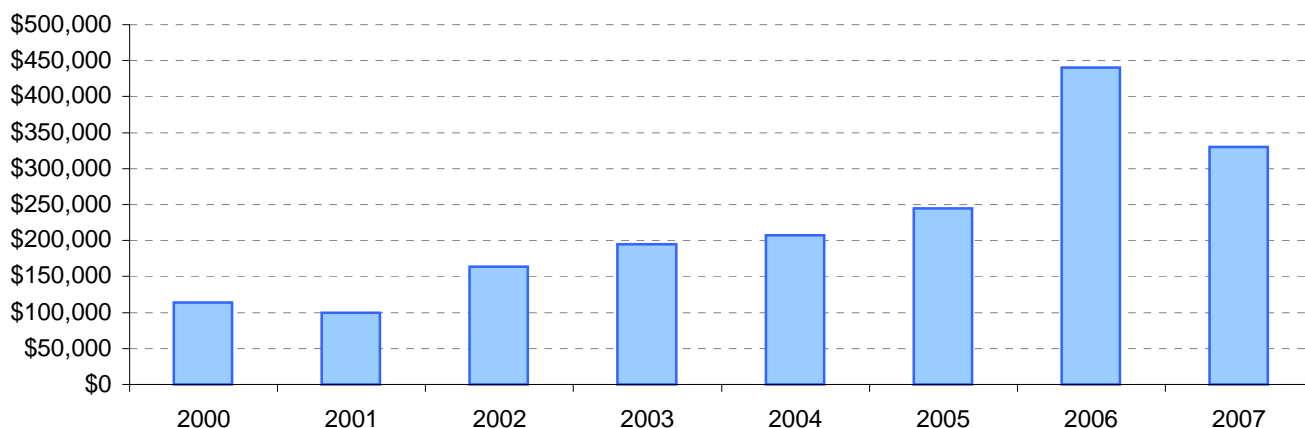
School name: Donald High School

Explanation: Account balance figures include official and investment accounts, and are calculated by taking the opening balance at 1st January plus the total receipts at 31st December less total payments at 31st December.

Account Balances (Official plus Investment Accounts)

2000	\$113,547	2004	\$207,166
2001	\$100,022	2005	\$244,476
2002	\$163,793	2006	\$439,955
2003	\$194,430	2007	\$330,370

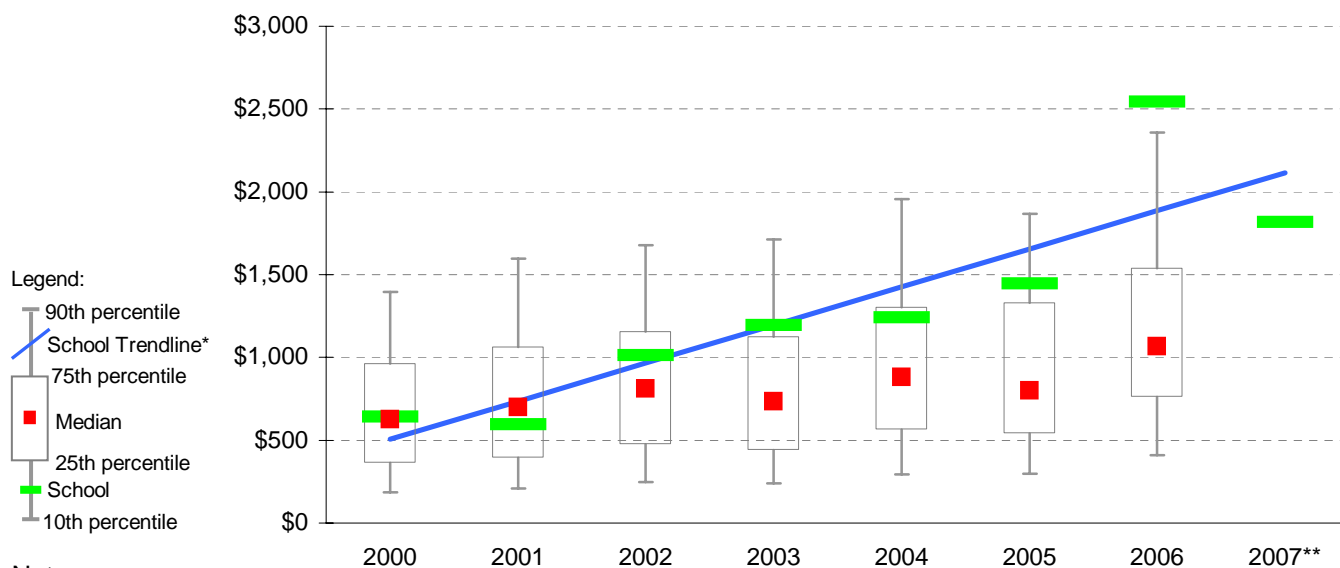
Account Balances



Account Balances (Official plus Investment Accounts) per student[†]

2000	\$642	2004	\$1,241
2001	\$594	2005	\$1,447
2002	\$1,012	2006	\$2,543
2003	\$1,194	2007	\$1,815

School account balances per student enrolled in August census plotted on state Secondary benchmarks[^]



Notes:

* The school trendline is being trialled. It is only plotted when there is data for each calendar year.

** 2007 benchmarks will be calculated in August, when data from all schools has been submitted.

† The account balance per student has been calculated to enable some comparison to be made between schools.

^ Benchmarks for primary, secondary, pri/sec, SDS, special and language schools.